

THE ART OF LUXURY



BRUUN RASMUSSEN

PART OF THE BONHAMS NETWORK

THE ART OF LUXURY

Traditionel Auktion 914



AUKTION

Torsdag 15. juni kl. 15

EFTERSYN

Onsdag 7. juni kl. 11 - 17

Torsdag 8. juni kl. 11 - 20

Fredag 9. juni kl. 10 - 17

Lørdag 10. juni kl. 11 - 16

Søndag 11. juni kl. 11 - 16

eller efter aftale

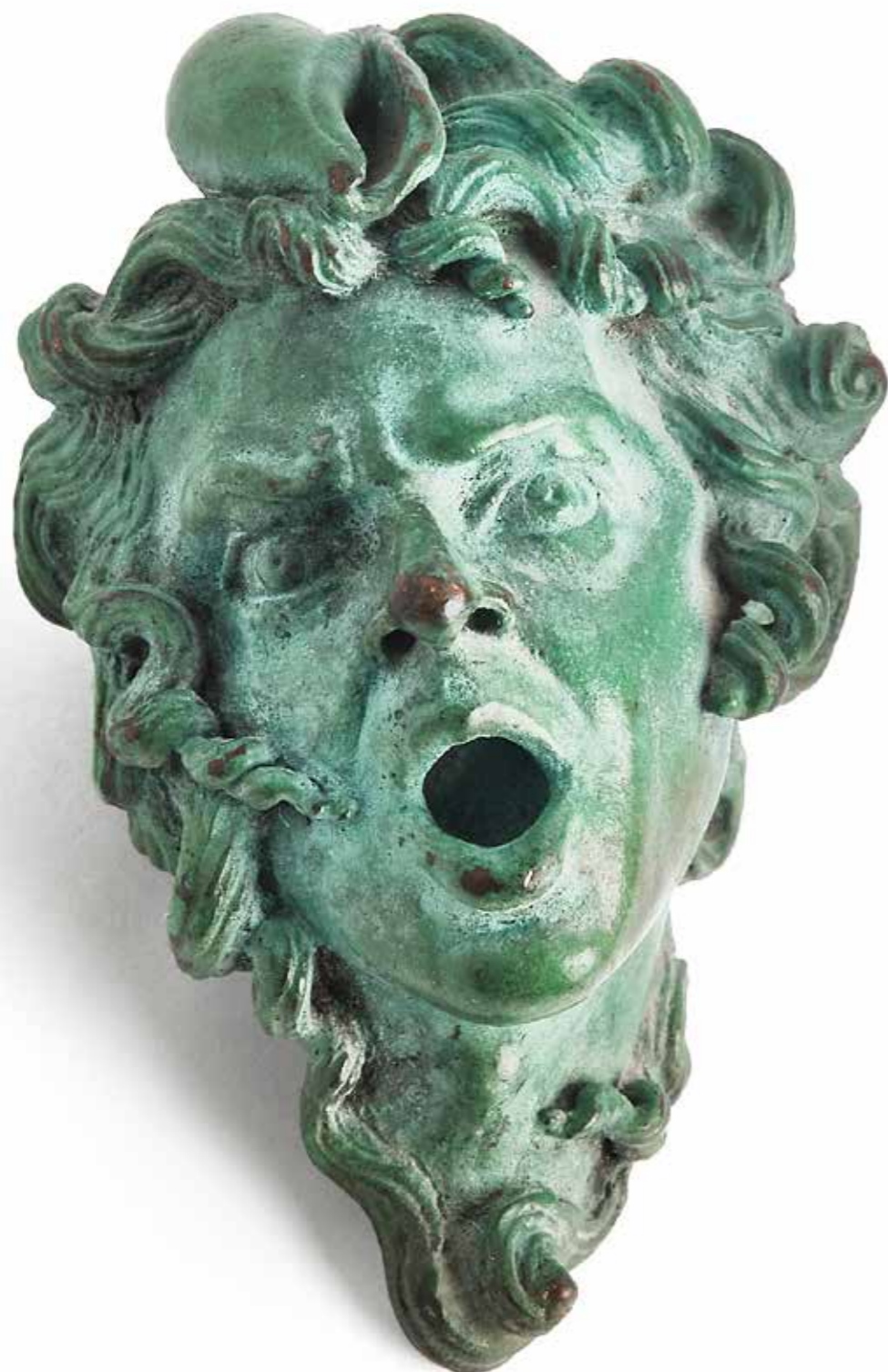


BRUUN RASMUSSEN

KUNSTAUKTIONER

Bredgade 33 · 1260 København K · Tlf. +45 8818 1111
info@bruun-rasmussen.dk · bruun-rasmussen.dk





AUKTIONSKALENDER

Mandag	12. juni - Design		
	kl. 15	Kunsthåndværk Møbler, lamper og tæpper	
	kl. 19	Danish Living - Design in Transition	
Tirsdag	13. juni - Modern Art		
	kl. 17	Malerier og skulpturer Grafik	
Onsdag	14. juni - Fine Art and Antiques		
	kl. 13	Asiatisk kunsthåndværk	601 - 669
	kl. 15	Manuskripter og arkivalier fra Valdemars Slot Møbler, ure, sølv, bronzer, porcelæn og tæpper	670 - 688 689 - 851
	kl. 18	Malerier og tegninger Ikoner	852 - 976 977 - 990
Torsdag	15. juni - Eid Mar		
	kl. 14:30	Auktion 918 - Eid Mar-denar	1
Torsdag	15. juni - The Art of Luxury		
	kl. 15	Smykker og tasker	991 - 1234
	kl. 18	Armbåndsure	1235 - 1284
	kl. 20	Netauktion på bruun-rasmussen.dk - Champagne	

VIGTIG INFORMATION VEDR. BUDGIVNING!

Bonhams' internationale kunder kan også byde med på Bruun Rasmussens aktuelle Traditionelle Auktion via Bonhams' hjemmeside: bonhams.com

SIDSTE FRIST FOR AFHENTNING: ONSDAG DEN 28. JUNI

Genstande købt på denne auktion skal være betalt senest otte dage efter fakturadatoen og afhentet i Bredgade 33 senest onsdag den 28. juni. I modsat fald bliver de transporteret til Bruun Rasmussens lager på Paul Bergsøes Vej 16 i Glostrup for købers regning og risiko, hvor de kan afhentes fra fredag den 30. juni. Transporten koster 150 kr. pr. genstand inkl. moms, og opbevaringen koster 150 kr. pr. genstand pr. påbegyndt uge inkl. moms.

Design Events at the Preview

Bredgade 33, Copenhagen

At Bruun Rasmussen, we are part of the festival "3daysofdesign", which each year attracts design enthusiasts from all over the world. This year the festival will be celebrated at galleries and design shops all over Copenhagen from 7-9 June. At our preview, we invite you inside to listen to great talks and experience events about design. The industry's leading design specialist Peter Kjølgaard and the legendary British design pioneer Tom Dixon will be at the helm.

Wednesday 7 June at 11 am to 12 pm

Opening remarks by Peter Kjølgaard and presentation by Tom Dixon

Peter Kjølgaard will give the opening remarks on "Danish Living – Design in Transition".

Tom Dixon will then present his thoughts on the creative process behind the "BIRD Eelgrass Chaise" chairs, which are up for auction.

Thursday 8 June at 4 to 8 pm

Drinks and live music with Tom Dixon and band + DJ

In the beautiful, historic saleroom, we can offer you a drink while Tom Dixon plays bass alongside Johannes Torpe on drums, Kristian Marstal on keyboard and vocals by Maria Marstal – all accompanied by a DJ.

Friday 9 June at 10 to 11 am

Coffee, croissants and a panel discussion

A panel discussion with Tom Dixon, Peter Kjølgaard, journalist Lars Hedebo Olsen from Politiken and design specialist Jonatan Jahn from Bukowskis on the historical traditions of design versus contemporary design.

All days at 11 am to 5 pm

Live performance with "Robot to Craft Special Edition Tom Dixon CONE Lights"

A Universal Robot will assist Tom Dixon in creating unique versions of his latest CONE table lamps. The lamps are made on site and the unique pieces will subsequently be up for auction.

We look forward to welcoming everyone to a couple of festive design days in the auction house!

THE ART OF LUXURY

Live Auction 914



AUCTION

Thursday 15 June 3 pm

PREVIEW

Wednesday 7 June 11 am - 5 pm

Thursday 8 June 11 am - 8 pm

Friday 9 June 10 am - 5 pm

Saturday 10 June 11 am - 4 pm

Sunday 11 June 11 am - 4 pm

or by appointment



BRUUN RASMUSSEN
AUCTIONEERS

Bredgade 33 · DK-1260 Copenhagen K · Tel +45 8818 1111
info@bruun-rasmussen.dk · bruun-rasmussen.com



BRUUN RASMUSSEN
PART OF THE BONHAMS NETWORK

3daysofdesign



DAYS OF SALE

Monday	12 June - Design		
	3 pm	Decorative art Furniture, lamps and carpets	
	7 pm	Danish Living - Design in Transition	
Tuesday	13 June - Modern Art		
	5 pm	Paintings and sculptures Prints	
Wednesday	14 June - Fine Art and Antiques		
	1 pm	Asian art	601 - 669
	3 pm	Manuscripts and documents from Valdemar's Castle Furniture, clocks, silver, bronzes, porcelain and carpets	670 - 688 689 - 851
	6 pm	Paintings and drawings Icons	852 - 976 977 - 990
Thursday	15 June - Eid Mar		
	2:30 pm	Auction 918 - Eid Mar Denarius	1
Thursday	15 June - The Art of Luxury		
	3 pm	Jewellery and handbags	991 - 1234
	6 pm	Wristwatches	1235 - 1284
	8 pm	Online Auction at bruun-rasmussen.dk - Champagne	

IMPORTANT INFORMATION ABOUT BIDDING AT THE AUCTION

Bonhams' international customers can also bid at Bruun Rasmussen's current Live Auction via Bonhams' website: bonhams.com

DEADLINE FOR CLAIMING ITEMS: WEDNESDAY 28 JUNE

Items bought at this auction must be paid no later than eight days from the date of the invoice and claimed at Bredgade 33 by Wednesday 28 June at the latest. Otherwise, they will be moved to Bruun Rasmussen's storage facility at Paul Bergsøes Vej 16 in Glostrup at the buyer's expense and risk. Here, they can be picked up from Friday 30 June. This transportation will cost DKK 150 per item VAT included, and storage will cost DKK 150 per item per week VAT included.

The Art of Luxury – et eksklusivt univers af smykker, fashion, armbåndsurre og vin

Vi er stolte over at kunne præsentere dette helt nye katalog under titlen "The Art of Luxury" til sommerens Traditionelle Auktion. I kataloget kan man gå på opdagelse i et eksklusivt univers af luksus inden for smykker, fashion, armbåndsurre og vin. Som en del af Bonhams' globale netværk af auktionshuse oplever vi en stor international interesse for disse fire luksuskategorier, som vi derfor sætter endnu mere fokus på i et samlet særskilt katalog. Der er således rig mulighed for at dykke ned i den ypperste kvalitet inden for de mest eftertragtede mærker.

Blandt smykkerne kommer der denne gang dansk smykkekunst under hammeren, når vi præsenterer en samling unikasmykker fra 1960-1970'erne af den populære guldsmed Arje Griegst formgivet i den eventyrlige motivverden af abstrakte ansigter. Kataloget byder desuden på de fineste diamantringe, smykker fra internationalt anerkendte juvelerer som Ole Lynggaard og Cartier samt smukke historiske smykker i stilarterne Belle Époque og Art Deco (f.eks. kat.nr. 1000, 1024 og 1082).

I den fashionable ende kan vi i det nye luksusunivers glæde den entusiastiske samler inden for designtasker med de allermest efterspurgte brands i sjældne udgaver, den bedste kvalitet og til konkurrencedygtige priser, der er svære at finde andre steder. Højdepunkterne er de to Chanel-tasker "Rectangular Mini Flap Bag" i sort og "Flap Bag" i pink samt de to ikoniske Hermès-tasker "Kelly Sellier 32" og "Birkin 35" (f.eks. kat.nr. 1228 og 1234).

Engagerede ursamlere kender tikkende mesterværker, når de ser dem, og det er lige netop, hvad vores katalog indeholder. Her er både nyere og vintage-armbåndsurre fra de mest anerkendte brands som Patek Philippe, Cartier og Rolex. Blandt Rolex-urene er et GMT Master med referencen 1675, som har været ejet af en sand eventyrer, der har rejst rundt om Grønland i kajak med uret som navigation, mens Cartier byder på et ur indbygget i en historisk lighter, som tidligere har tilhørt Kong Georg II af Grækenland (f.eks. kat.nr. 1259 og 1279).

Den kompromisløse vinsamler kan glæde sig over vores temaauktion online med sjældne champagner i højeste kvalitet. I den helt luksuriøse ende findes en flaske Dom Perignon rosé 1988 P3, som er en stjerneårgang pakket ind i producentens stilfulde tilgang til rosé champagne. Andre højdepunkter tæller en vifte af årgangschampagner fra Egly-Ouriot og 1981 Krug Collection. Bliv inspireret i katalogets champagnetema på side 12, og find alle champagnerne på vores hjemmeside, hvor de kommer på Netauktion den 15. juni.

De fire kategorier kan fremover findes i kataloget "The Art of Luxury" og dermed ikke i vores øvrige kataloger som før. Smykker, fashion og armbåndsurre sælges på Traditionel Auktion og præsenteres i kataloget, mens vin kommer på Netauktion og præsenteres på vores hjemmeside. Ønsker man at modtage det nye katalog i postkassen, kan man tilmelde sig ved at logge ind på sin personlige side på bruun-rasmussen.dk/m/account/catalog_subscriptions. Kataloget kan desuden findes online på vores hjemmeside.

Lad propperne springe!

Vurderings- og salgsdirektør Kasper Nielsen & administrerende direktør Jakob Dupont



The Art of Luxury – an Exclusive World of Jewellery, Fashion, Wristwatches and Wine

We are proud to present this brand-new catalogue entitled "The Art of Luxury" for this summer's Live Auction. In the catalogue, you can discover an exclusive world of luxury with jewellery, fashion, wristwatches and wine. As part of Bonhams' global network of auction houses, we are seeing a great deal of international interest in these four luxury categories, and we are therefore putting even more focus on them in a separate catalogue of their own. You therefore have ample opportunity to delve into the highest quality from some of the most sought-after brands on the following pages.

Among the jewellery, several Danish pieces are up for auction, when we present a collection of unique jewellery from the 1960s-1970s by the popular goldsmith Arje Griegst, designed in the fairytale world of motifs with abstract faces. The catalogue also offers the finest diamond rings, jewellery from internationally recognized jewellers such as Ole Lynggaard and Cartier as well as beautiful historical jewellery in the Belle Époque and Art Deco styles (e.g. cat. no. 1000, 1024 and 1082).

At the fashionable end of this new world of luxury we can please the enthusiastic collector of designer bags with the most sought-after brands in rare editions, the best quality and at competitive prices that are hard to find elsewhere. The highlights are the two Chanel bags "Rectangular Mini Flap Bag" in black and "Flap Bag" in pink as well as the two iconic Hermès bags "Kelly Sellier 32" and "Birkin 35" (e.g. cat. no. 1228 and 1234).

Dedicated wristwatch collectors know ticking masterpieces when they see them, and masterpieces are exactly what our catalogue is full of. There are both newer and vintage wristwatches from the most well-known brands such as Patek Philippe, Cartier and Rolex. Among the Rolex watches is a GMT Master reference 1675, which has been owned by a true adventurer who journeyed around Greenland in a kayak using the watch for navigation, while Cartier offers a watch built into a historic lighter that previously belonged to King George II of Greece (e.g. cat. no. 1259 and 1279).

The uncompromising wine collector can enjoy our Online Theme Auction with rare Champagnes of the highest quality. At the very luxurious end is a bottle of Dom Perignon rosé 1988 P3, which is a stellar vintage wrapped in the producer's stylish approach to rosé Champagne. Other highlights include a range of vintage champagnes from Egly-Ouriet and the 1981 Krug Collection. Learn more about the Champagne theme auction on page 12 of this catalogue, and find all the Champagnes on our website, where they will be auctioned off on 15 June.

The four categories can from now on be found in the catalogue "The Art of Luxury" and therefore not in our other catalogues as previously. Jewellery, fashion and wristwatches are sold at Live Auctions and all the lots are presented in this catalogue, while wine will be sold at an Online Auction and the lots presented on our website. If you want to receive the new catalogue at home, you can sign up for a subscription by logging on to your personal page at bruun-rasmussen.dk/m/account/catalog_subscriptions. The catalogue can also be found online on our website.

Let's raise our glasses in celebration of this new catalogue!

Director of Valuation and Sales Kasper Nielsen & CEO Jakob Dupont



The Art of Champagne

Wine is an essential part of our “The Art of Luxury” category, and with an Online Auction on 15 June, you can get your fill of liquid luxury with a sale entirely dedicated to Champagne: the most celebrated drink on the planet, which you deserve in victory and need in defeat.

Champagne differs from other types of wine by partly coming from the specific and renowned region in France, partly by having two rounds of fermentation, where the second round takes place in the actual bottle with a mixture of still wine, sugar and yeast added. It is also this second round which ultimately gives Champagne its characteristic bubbles, a process also known as “prise de mousse” or ‘capturing the sparkle’.

The auction includes several highlights. Here we would like to point you in the direction of just a few of the many exciting lots. First up, we find a bottle of Dom Perignon rosé 1988 P3. A stellar vintage wrapped in the producer’s vinous and stylish approach to rosé Champagne. In the words of the winemaker, P3 marks a new stage in the timeline of this Champagne, which comes to life after many years on the yeast sediment. Combined with a later moment of disgorgement, the removal of the yeast lees, this process contributes to an overall impression of a wine that is the essence of nerve, intensity and freshness.

Speaking of intensity, we have also gathered a range of vintage Champagnes from Egly-Ouriet in large sizes at this auction. It is (unfortunately) no longer a secret that the wines from this maker are of a towering high quality and one of the best impressions of pure pinot noir power, with acidity to hold back the red fruit so that the wines are never experienced as flabby or inharmonious. Anselme Selosse gave the producer his blessing long ago and thereby elevated Egly-Ouriet from your middle-of-the-road meal to a Michelin-worthy experience.

We complete this three-stage rocket introduction of our Champagne auction with another of the big brands in the production of the bubbly wine. Out of the many lots with Krug as a producer, the following bottle stands out: the 1981 Krug Collection in magnum size. 1981 is not the most celebrated vintage in Champagne in general. However, this vintage was highly regarded by the late Henri Krug himself, who celebrated it as one of the best made during his time as head of the company. There is a large proportion of Chardonnay in the bottle compared to the typical distribution in vintage Krug, and then of course there is the fact that there is enough in the bottle for a small group to retaste it again and again, which bodes well for a magnificent experience.

We wish everyone good luck at the Online Auction at 8 PM (CEST) on 15 June. You can already place your bids at bruun-rasmussen.dk from 2 June, where the auction will go online.

Santé!

CHAMPAGNE

Thursday 15 June 8 pm

At bruun-rasmussen.dk



SPECIALISTS IN JEWELLERY,
FASHION, WATCHES AND WINE



Head of International Jewellery
Katrin Mikkelsen Sørensen
+45 8818 1174
kms@bruun-rasmussen.dk



Jewellery and Handbags
Lise Jacobsen
+45 8818 1175
bst@bruun-rasmussen.dk



Fashion
Emma Marie Huus-Thomsen
+45 8818 1179
eht@bruun-rasmussen.dk



Head of Department of Wristwatches
Vilhelm Islandi Bramsen
+45 8818 1239
vib@bruun-rasmussen.dk



Wristwatches
Frederik Plum
+45 8818 1168
fp@bruun-rasmussen.dk



Pocket Watches
Heidi Schophuus Jensen
+45 8818 1163
hsj@bruun-rasmussen.dk



Head of Department of Wine
Thomas Rosendahl Andersen
+45 8818 1206
tra@bruun-rasmussen.dk



Director of Valuations and Sales
Kasper Nielsen
+45 8818 1121
kn@bruun-rasmussen.dk



Shipping
Tina Bavnbek Jepsen
+45 8818 1056
tbj@bruun-rasmussen.dk



Representative France + Belgium
Ditte Herborg Krogh
+33 6 6185 4564
dhk@bruun-rasmussen.dk



Global Head of Jewellery - Bonhams
Jean Ghika
+44 20 7468 8282
jean.ghika@bonhams.com



Global Head of Watches - Bonhams
Jonathan Darracott
+44 20 7447 7412
jonathan.darracott@bonhams.com

WRISTWATCHES

Thursday 15 June 6 pm

Lot 1235 - 1284

DISCLAIMER

All wristwatches up for auction were in working condition at the time of their consignment and inspection, but they have not been tested over a longer period of time.

Since the wristwatches are in a used condition, no warranty is provided for their functionality or of the originality of any replaced parts in the wristwatches, such as the dial, hands, bezel, mechanical parts etc.

If a recent service history does not appear in the description of the individual wristwatch, we recommend the buyer have the watch serviced.





1235

1235
ROLEX
Model: Oysterdate Precision
Reference: 6694
Movement: Manual, cal. 1215
Material: Steel
Diameter: 34.5 mm
Strap/Bracelet: Rolex "Oyster" bracelet of steel
Buckle/Clasp: Rolex folding clasp of steel
Circumference: app. 18 cm
Year: 1969

Middle case no. 6694
Case back no. 6694 II 69
Movement no. 10'582
Serial no. 2'185'359
End link no. 557
Bracelet no. 78350 19
Folding clasp no. 78350 DKK 15,000–20,000 / € 2,000–2,700

1237
ROLEX
Model: Date
Reference: 1500
Movement: Automatic, cal. 1570
Material: Steel
Diameter: 35 mm
Strap/Bracelet: Rolex "Oyster" bracelet of steel
Buckle/Clasp: Rolex folding clasp of steel
Circumference: 18.5 cm
Year: 1970

Middle case no. 1500
Case back no. 1002
Movement no. 440'142
Serial no. 2'282'995
End link no. 557 B
Bracelet no. 78350 19
Folding clasp no. 78350 DKK 20,000 / € 2,700



1237



1236

1236
ROLEX
Model: Royal Precision
Reference: 6426
Movement: Manual, cal. 1215
Material: Steel
Diameter: 34.5 mm
Strap/Bracelet: Rolex "Oyster" bracelet of steel
Buckle/Clasp: Rolex folding clasp of steel
Circumference: app. 18.5 cm
Year: 1960

Middle case no. 6426
Case back no. 6427 IV.59 6426
Movement no. N28'930
End link no. 557 B
Bracelet no. 78350 19
Folding clasp no. 78350

Accompanied by Rolex box, manual, additional brown alligator strap, service papers from authorized retailer Klarlund 2008 and 2015 together with original receipt of purchase from Klarlund 1960.

Items made of crocodile or alligator skin require a CITES export permit in order to be exported from Denmark to a country outside The European Union. Buyers residing outside the European Union are required to obtain this permit. More information is available upon request.
DKK 20,000–25,000 / € 2,700–3,350



1238
ROLEX
Model: Submariner
Reference: 16610
Movement: Automatic, cal. 3135
Material: Steel
Diameter: 40 mm
Strap/Bracelet: Rolex "Oyster" bracelet of steel
Buckle/Clasp: Rolex folding clasp of steel
Circumference: app. 20.5 cm
Year: 1996

Middle case no. 16610
Case back no. 16610
Movement no. 7'673'958
Serial no. T'975'520
End link no. 501 B
Bracelet no. 93150
Folding clasp no. 93150

Accompanied by manuals, one additional link, original receipt of purchase and certificate from authorized retailer Klarlund 1997.
DKK 50,000–60,000 / € 6,700–8,050



1238



1239

1239
IWC
 Model: Portugieser "Laureus"
 Reference: IW371432
 Movement: Automatic chronograph, cal. 79350
 Material: Steel
 Diameter: 41 mm
 Strap/Bracelet: Black alligator strap
 Buckle/Clasp: IWC C-type buckle of steel
 Year: 2007

Accompanied by IWC box, manuals and certificate from authorized retailer Hvelplund 2007.

Limited edition no. 1976/2000.

Items made of crocodile or alligator skin require a CITES export permit in order to be exported from Denmark to a country outside The European Union. Buyers residing outside the European Union are required to obtain this permit. More information is available upon request.

DKK 30,000–40,000 / € 4,050–5,350



1241
IWC
 Model: Pilot Spitfire UTC
 Reference: IW325102
 Movement: Automatic, cal. 37526
 Material: Steel
 Diameter: 39 mm
 Strap/Bracelet: Brown IWC calfskin strap
 Buckle/Clasp: IWC C-type buckle of steel
 Year: 2000s

DKK 20,000–25,000 / € 2,700–3,350



1241



1240

1240
JAEGER-LECOULTRE
 Model: Master Geographic
 Reference: 142.8.92.S
 Movement: Automatic, cal. 929/3
 Material: Steel
 Diameter: 38 mm
 Strap/Bracelet: Black Jaeger-LeCoultre alligator strap
 Buckle/Clasp: Steel Jaeger-LeCoultre folding clasp
 Year: 2000s

Items made of crocodile or alligator skin require a CITES export permit in order to be exported from Denmark to a country outside The European Union. Buyers residing outside the European Union are required to obtain this permit. More information is available upon request.

DKK 30,000–40,000 / € 4,050–5,350

1242
IWC
 Model: Portuguese F.A. Jones
 Reference: IW544201
 Movement: Manual, cal. 98290
 Material: Steel
 Diameter: 43 mm
 Strap/Bracelet: Brown IWC alligator strap
 Buckle/Clasp: IWC C-type buckle of steel
 Year: 2007

Accompanied by IWC box, manuals, travel pouch, certificate from authorized retailer Plaza Copenhagen Airport 2007 and service papers from IWC 2022.

Limited edition no. 2721/3000.

Items made of crocodile or alligator skin require a CITES export permit in order to be exported from Denmark to a country outside The European Union. Buyers residing outside the European Union are required to obtain this permit. More information is available upon request.

DKK 40,000–50,000 / € 5,350–6,700



1242





1243

1243
VACHERON CONSTANTIN
Movement: Manual, cal. P453/3B
Material: 18k rose gold
Diameter: 35.5 mm
Strap/Bracelet: Brown crocodile strap
Buckle/Clasp: C-type buckle of 18k gold
Year: 1940s

*Case back no. 321'471
Movement no. 490'717*

Items made of crocodile or alligator skin require a CITES export permit in order to be exported from Denmark to a country outside The European Union. Buyers residing outside the European Union are required to obtain this permit. More information is available upon request. DKK 25,000–30,000 / € 3,350–4,050



1245

1245
ROLEX
Reference: 1216
Movement: Manual
Material: 9k gold
Diameter: 31 mm
Strap/Bracelet: Brown crocodile strap
Buckle/Clasp: Gold-plated Rolex C-type buckle
Year: 1929

*Case back no. 1216
Serial no. 68'106*

Accompanied by later box, service papers from Krognos 2023 and receipt of purchase from The Vintage Watch Company 2011.

Items made of crocodile or alligator skin require a CITES export permit in order to be exported from Denmark to a country outside The European Union. Buyers residing outside the European Union are required to obtain this permit. More information is available upon request. DKK 25,000–30,000 / € 3,350–4,050



1244

1244
PATEK PHILIPPE
Model: Calatrava
Reference: 3416/P
Movement: Manual, cal. 23-300
Material: 18k gold
Diameter: 33 mm
Strap/Bracelet: Integrated Patek Philippe of 18k gold
Buckle/Clasp: Patek Philippe folding clasp of 18k gold
Circumference: app. 20.5 cm
Year: 1960s

*Case back no. 3416/P
Serial no. 2'618'658 DKK 30,000–40,000 / € 4,050–5,350*



1246

1246
ROLEX
Movement: Manual
Material: 18k gold
Diameter: 19 x 19 mm
Strap/Bracelet: Integrated Rolex bracelet of 18k gold
Buckle/Clasp: Rolex folding clasp of 18k gold
Circumference: app. 17.5 cm
Year: 1940s–1950s DKK 18,000–20,000 / € 2,400–2,700





1248

1248
ROLEX
 Model: Submariner
 Reference: 1680
 Movement: Automatic, cal. 1570
 Material: Steel
 Diameter: 39 mm
 Strap/Bracelet: Rolex "Oyster" bracelet of steel
 Buckle/Clasp: Rolex folding clasp of steel
 Circumference: app. 17.5 cm
 Year: 1971

Middle case no. 1680
Case back no. 5513
Movement no. D'991'486
Serial no. 2'811'646
End link no. 580
Bracelet no. 93150
Folding clasp no. 93150

Accompanied by service papers from Urværkstedet, Odense 2021 and copy of proof of authenticity from authorized retailer Klarlund 2004.

DKK 100,000–150,000 / € 13,500–20,000



1247

1247
ROLEX
 Model: Daytona
 Reference: 116520
 Movement: Automatic chronograph, cal. 4130
 Material: Steel
 Diameter: 40 mm
 Strap/Bracelet: Rolex "Oyster" bracelet of steel
 Buckle/Clasp: Rolex folding clasp of steel
 Circumference: app. 19 cm
 Year: 2011

Middle case no. 116520
Case back no. 2100
Movement no. C0'316'605
Serial no. V'953'673
End link no. 78590

Accompanied by Rolex box, manual, hangtag, one additional link and certificate from authorized retailer Klarlund 2011.

DKK 120,000–150,000 / € 16,000–20,000





**1249
PATEK PHILIPPE**

Model: Gondolo
 Reference: 4866/110G-011
 Movement: Quartz, cal. E 15
 Material: 18k white gold
 Diameter: 25 x 25 mm
 Strap/Bracelet: Integrated Patek Philippe bracelet of 18k white gold
 Buckle/Clasp: Patek Philippe folding clasp of 18k white gold
 Circumference: app. 15.5 cm
 Year: 2002

*Case back no. 4866/110
 Serial no. 4'050'183
 Movement no. 1'677'678*

Accompanied by Patek Philippe box, manual, four additional links, pouch and certificate from authorized retailer Gübelin 2002. The dial is set with four single-cut diamond hour markers. The bezel is set with 52 brilliant-cut diamonds, total 0.42 ct. DKK 60,000 / € 8,050



1249

**1250
ROLEX**

Model: Day-Date Oysterquartz
 Reference: 19019
 Movement: Quartz, cal. 5055
 Material: 18k white gold
 Diameter: 36 mm
 Strap/Bracelet: Integrated Rolex "Oysterquartz" bracelet of 18k white gold
 Buckle/Clasp: Rolex folding clasp of 18k white gold
 Circumference: app. 18 cm
 Year: 2000

*Middle case no. 19019A
 Case back no. 2019
 Movement no. 0'139'936
 Serial no. P'506'840
 Folding clasp no. 19019A*

DKK 130,000–150,000 / € 17,500–20,000



1250

**1251
ROLEX**

Model: Oyster Perpetual
 Reference: 177200
 Movement: Automatic, cal. 2231
 Material: Steel
 Diameter: 31 mm
 Strap/Bracelet: Rolex "Oyster" bracelet of steel
 Buckle/Clasp: Rolex folding clasp of steel
 Circumference: app. 16.5 cm
 Year: 2017

*Middle case no. 177200
 Case back no. 2300
 Movement no. 14'325'2N1
 Serial no. D5'0X6'425
 End link no. 70160*

Accompanied by Rolex hangtag, one additional link and certificate from authorized retailer Klarlund 2017.

DKK 25,000–30,000 / € 3,350–4,050



1251



1252

1252
ROLEX
Model: Daytona
Reference: 16528
Movement: Automatic chronograph, cal. 4030
Material: 18k gold
Diameter: 40 mm
Strap/Bracelet: Rolex "Oyster" bracelet of 18k gold
Buckle/Clasp: Rolex folding clasp of 18k gold
Circumference: app. 19.5 cm
Year: 1996

*Middle case no. 16528
Case back no. 16500
Movement no. 135'333
Serial no. W'280'316
End link no. 103*

Accompanied by Rolex box and certificate from authorized retailer Klarlund 1996.

The dial is set with single-cut diamond hour markers.

DKK 250,000–350,000 / € 33,500–47,000



1253

1253
ROLEX
 Model: Submariner
 Reference: 16613
 Movement: Automatic, cal. 3135
 Material: 18k gold and steel
 Diameter: 40 mm
 Strap/Bracelet: Rolex "Oyster" bracelet of 18k gold and steel
 Buckle/Clasp: Rolex folding clasp of 18k gold and steel
 Circumference: app. 18.5 cm
 Year: 2000

Middle case no. 16613
Case back no. 2160
Movement no. 3 9168157
Serial no. P'983'019
End link no. 701
Bracelet no. 93253
Folding clasp no. 93253

Accompanied by Rolex box, additional bezel and crystal, receipt of purchase and pressure test from Tureloj 2021.

DKK 60,000–80,000 / € 8,050–10,500



1254

1254
GIRARD - PERREGAUX
 Model: Laureato
 Reference: 8010
 Movement: Automatic, cal. 3100-378
 Material: 18k rose gold and steel
 Diameter: 36 mm
 Strap/Bracelet: Integrated Girard-Perregaux steel bracelet
 Buckle/Clasp: Girard-Perregaux folding clasp of steel
 Circumference: app. 18.5 cm
 Year: 1990s

Accompanied by Ole Mathiesen fabric pouch and service receipt from Girard-Perregaux from 2020. *DKK 50,000 / € 6,700*

1255
CHOPARD
 Model: Mille Miglia
 Reference: 1884
 Movement: Automatic chronograph, cal. 7754
 Material: 18k gold
 Diameter: 42.5 mm
 Strap/Bracelet: Black calfskin strap
 Buckle/Clasp: Chopard folding clasp of 18k gold
 Year: 2010s

Limited edition no. 190/250.

This lot is being sold at the request of a lawyer, an insurance company or a public authority.

DKK 30,000–40,000 / € 4,050–5,350



1255

1256
PATEK PHILIPPE
 Model: Calatrava
 Reference: 3591
 Movement: Automatic, cal. 28-255
 Material: 18k gold
 Diameter: 34 mm
 Strap/Bracelet: Integrated Patek Philippe bracelet of 18k gold
 Buckle/Clasp: Patek Philippe folding clasp of 18k gold
 Circumference: app. 17 cm
 Year: 1960s

Case back no. 3591

Serial no. 522'138

Accompanied by Patek Philippe service pouch.

DKK 35,000–40,000 / € 4,700–5,350



1256



1258

1258
BREGUET
 Model: Classique
 Reference: 5907
 Movement: Manual, cal. 511DR
 Material: 18k gold
 Diameter: 34.5 mm
 Strap/Bracelet: Black crocodile strap
 Buckle/Clasp: Breguet C-type buckle of 18k gold
 Year: 2013

Accompanied by Breguet box, two additional straps, various movement parts, manual, service papers from 2014, receipt of purchase and certificate from authorized retailer Ole Mathiesen 2013.

Items made of crocodile or alligator skin require a CITES export permit in order to be exported from Denmark to a country outside The European Union. Buyers residing outside the European Union are required to obtain this permit. More information is available upon request. DKK 50,000–60,000 / € 6,700–8,050



1257

1257
ROLEX
 Model: Cellini
 Reference: 5330/8
 Movement: Manual, cal. 1602
 Material: 18k gold
 Diameter: 36 mm
 Strap/Bracelet: Black Rolex crocodile strap
 Buckle/Clasp: Rolex C-type buckle of 18k gold
 Year: 2007

*Case back no. 5330
 Movement no. E029942
 Serial no. K'698'292*

Accompanied by Rolex box, manual and certificate from authorized retailer Lowell Malta 2007.

Items made of crocodile or alligator skin require a CITES export permit in order to be exported from Denmark to a country outside The European Union. Buyers residing outside the European Union are required to obtain this permit. More information is available upon request. DKK 30,000–40,000 / € 4,050–5,350





1259

1259
ROLEX
Model: GMT-Master
Reference: 1675
Movement: Automatic, cal. 1570
Material: Steel
Diameter: 39 mm
Strap/Bracelet: Rolex "Oyster" bracelet of steel
Buckle/Clasp: Rolex folding clasp of steel
Circumference: 17.5 cm
Year: 1979

Middle case no. 1675
Case back no. 1675
Movement no. D'789'725
Serial no. 5'717'986
End link no. 580
Bracelet no. 78360
Folding clasp no. B

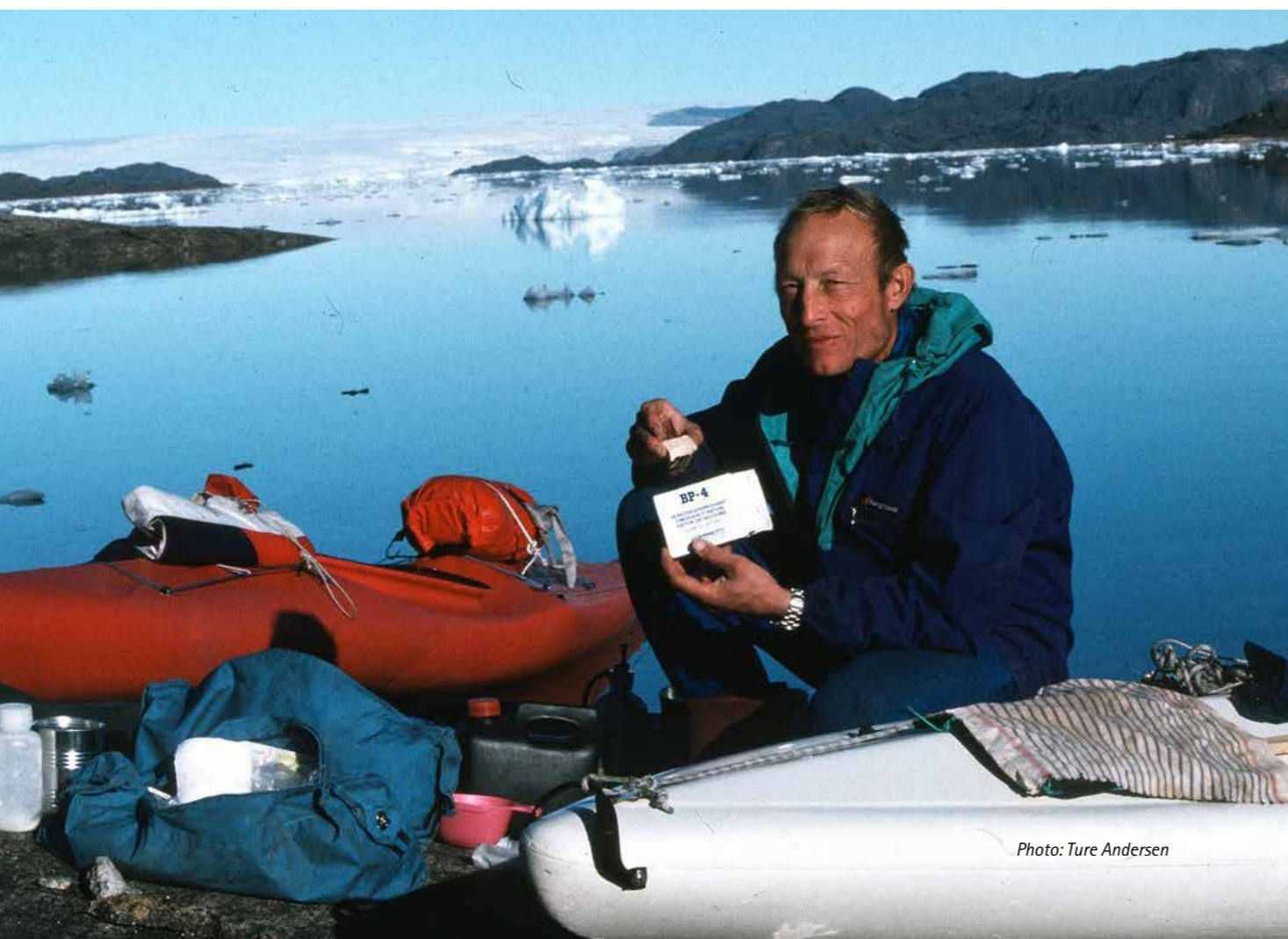


Photo: Ture Andersen



Photos: Ture Andersen

Defining the essence of a true explorer proves a formidable task. Such an individual ventures into uncharted territories, defying the boundaries of possibility and embracing an insatiable wanderlust. John Andersen, an 80-year-old architect, writer, and above all adventurer, is one such individual. For over half a century, John has immersed himself in motorcycle exploration, mountaineering and archaeological expeditions spanning the globe, with a particular focus on Greenland and Asia. His unwavering spirit earned him the esteemed position of Chairman of the Adventurer's Club in Denmark, while accolades, including the prestigious Folkersen Award in 2016, have celebrated his many achievements.

Among John's many remarkable feats as an explorer, one stands out as an enduring testament to his indomitable spirit – an endeavour that unfolded over more than three decades. From 1976 to 2006, John embarked on a series of unparalleled solo-kayak expeditions, becoming the first and only person in the world to kayak the complete distance around Greenland in this manner. Throughout his journey and countless other ventures since the late 1970s, he wore and entrusted a remarkable timepiece which we have the great privilege to offer on auction.

No watch brand is as associated with ruggedness, exploration and sheer adventure as Rolex. Flipping through National Geographic magazines from the latter half of the 20th century, one encounters Rolex advertisements underlining the brand's unwavering significance as a watch manufacturer for the most demanding sportsmen and adventurers worldwide – a group that undoubtedly includes John Andersen. Aware that his travels would take him to the farthest corners of the globe, John naturally gravitated towards the GMT-Master, a watch that allowed him to simultaneously keep track of two time zones while also functioning as an additional navigational instrument. Even more interesting is the fact that this watch may have been the only thing that unfailingly has been with him on these innumerable journeys, whether enduring temperatures as low as minus 40 degrees in Greenland or the soaring heat exceeding plus 40 degrees in Arabia.

One of John's largest contributions to those interested in explorative voyages can be found in his long list of publications, in which he recounts the trials and triumphs of some of the most challenging and compelling journeys. These include various Greenland expeditions, motorcycle trips and Arabic adventures. Today, John dedicates a considerable portion of his time to lecturing, sharing his vast experiences and fostering a sense of camaraderie among like-minded individuals.

This is a rare opportunity to acquire a watch that has traversed the globe strapped to the wrist of a living legend; a timepiece that has accompanied its owner on the most extraordinary of voyages.

DKK 100,000–200,000 / € 13,500–27,000



1260

**1260
TUDOR**

Model: Submariner "Snowflake"
Reference: 9411/0
Movement: Automatic, cal. 2784
Material: Steel
Diameter: 39.5 mm
Strap/Bracelet: Rolex "Jubilee" bracelet of steel
Buckle/Clasp: Rolex folding clasp of steel
Circumference: app. 18 cm
Year: 1979

*Middle case no. 9411/0
Case back no. 9411
Serial no. 916'306
End link no. 55
Folding clasp no. 6251H*

DKK 60,000–80,000 / € 8,050–10,500



**1262
MOVADO**

Reference: 301
Movement: Manual, cal. FP 21
Material: 18k white gold
Diameter: 34.5 x 31.5 mm
Strap/Bracelet: Integrated 18k white gold Movado bracelet
Buckle/Clasp: 18k white gold Movado folding clasp
Circumference: app. 20 cm
Year: 1970s

*Serial no. W'R99'276
Case back no. 0'01M'271*

The dial is made of lapis lazuli.

*Accompanied by Chopard box, original exchanged winding crown,
service receipts from authorized retailer Hvelplund 1992 and 1998,
purchase receipt and certificate from Hvelplund 1973.*

DKK 20,000–30,000 / € 2,700–4,050



1262



1261

**1261
OMEGA**

Model: Seamaster
Reference: 168.1640
Movement: Automatic, cal. 1120
Material: Steel
Diameter: 41.5 mm
Strap/Bracelet: Omega bracelet of steel
Buckle/Clasp: Omega folding clasp of steel
Circumference: app. 20 cm
Year: 2006

Case back no. 168.1640

*Accompanied by later box and evaluation from Jälmers Ur 2015.
DKK 18,000–22,000 / € 2,400–2,950*

**1263
PIAGET**

Reference: 9706 A 6 "Asprey"
Movement: Manual, cal. 9P
Material: 18k white gold
Diameter: 24 mm
Strap/Bracelet: Integrated, textured Piaget bracelet of 18k white gold
Buckle/Clasp: Piaget folding clasp of 18k white gold
Circumference: app. 15 cm
Year: 1970s

*Case back no. 26
Serial no. 131'438
Movement no. 671'390*

*The dial is made of turquoise stone and signed Asprey. The bezel is set
with numerous single-cut diamonds and four turquoise stones.*

DKK 60,000–80,000 / € 8,050–10,500



1263



1264

1264
PATEK PHILIPPE

Model: Ellipse
Reference: 3548
Movement: Manual, cal. 23 300
Material: 18k gold
Diameter: 32 x 28 mm
Strap/Bracelet: Integrated Patek Philippe bracelet of 18k gold
Buckle/Clasp: Patek Philippe folding clasp of 18k gold
Circumference: app. 18.5 cm
Year: 1971

*Case back no. 3548
Serial no. 2'697'780
Movement no. 1'517'251*

Accompanied by Patek Philippe box and certificate from authorized re-tailer Ole Mathiesen 1971. DKK 40,000–50,000 / € 5,350–6,700

1266
PATEK PHILIPPE

Model: Ellipse
Reference: 4464/2
Movement: Manual, cal. 16-250
Material: 18k white gold
Diameter: 20 x 23.5 mm
Strap/Bracelet: Integrated Patek Philippe bracelet of 18k white gold
Buckle/Clasp: Patek Philippe folding clasp of 18k white gold
Circumference: app. 18.5 cm
Year: 1970s

*Case back no. 4464/2
Serial no. 540'327 DKK 20,000–25,000 / € 2,700–3,350*



1266



1265

1265
BULGARI

Model: Assioma
Reference: AA P 26 G
Movement: Quartz, cal. MVE200
Material: 18k gold
Diameter: 18.5 x 22 mm
Strap/Bracelet: Bulgari bracelet of 18k gold
Buckle/Clasp: Bulgari folding clasp of 18k gold
Circumference: app. 15 mm
Year: 2009

*Accompanied by Bulgari box, manuals and certificate from Bulgari London 2009.
The dial is set with numerous brilliant-cut diamonds.
DKK 40,000–50,000 / € 5,350–6,700*



1267
CHOPARD

Model: La Strada
Reference: 433 1
Movement: Quartz, ETA cal. 208002
Material: 18k white gold
Diameter: 18 x 30 mm
Strap/Bracelet: Chopard bracelet of 18k white gold
Buckle/Clasp: Chopard folding clasp of 18k white gold
Circumference: app. 14 cm
Year: 2000s

The dial, case and bezel are set with numerous brilliant-cut diamonds throughout. DKK 40,000–60,000 / € 5,350–8,050



1267





1268

1268
PATEK PHILIPPE

Model: Nautilus
Reference: 5712G-001
Movement: Automatic, cal. 240
Material: 18k white gold
Diameter: 40 mm
Strap/Bracelet: Black Patek Philippe crocodile strap
Buckle/Clasp: Patek Philippe folding clasp of 18k white gold
Year: 2008

Serial no. 4'448'959
Movement no. 3'176'092

Accompanied by Patek Philippe box, manuals, new setting pin, full service papers from authorized retailer Ole Mathiesen 2014 and certificate from Ole Mathiesen 2008.

Few watches are as iconic as the Patek Philippe Nautilus. Originally presented to the world in steel, this particular watch is the more luxurious edition of Patek's most coveted model. Cased in 18k white gold and fitted on a Patek Philippe crocodile strap, it simply oozes understated elegance. What sets the reference 5712 apart from the classic Nautilus are the eccentric subdials, telling the wearer about the date, the current phase of the moon, running seconds and the state of winding. This makes for an interesting dial that doesn't seem to ever start boring you.

Items made of crocodile or alligator skin require a CITES export permit in order to be exported from Denmark to a country outside The European Union. Buyers residing outside the European Union are required to obtain this permit. More information is available upon request.

DKK 400,000-500,000 / € 53,500-67,000





1269

1269
ROLEX
 Model: GMT-Master
 Reference: 16700
 Movement: Automatic, cal. 3175
 Material: Steel
 Diameter: 40 mm
 Strap/Bracelet: Rolex "Oyster" bracelet of steel
 Buckle/Clasp: Rolex folding clasp of steel
 Circumference: app. 20 cm
 Year: 1995

Middle case no. 16700
Case back no. 16700
Movement no. 6'917'654
Serial no. W'945'969
End link no. 501 B
Bracelet no. 78360
Folding clasp no. 78360

Accompanied by black GMT bezel insert, green Rolex service pouch and service papers from authorized retailer Knud Pedersen 2018. DKK 80,000–100,000 / € 10,500–13,500



1270

1270
ROLEX
 Model: Submariner
 Reference: 5512
 Movement: Automatic, cal. 1530
 Material: Steel
 Diameter: 39 mm
 Strap/Bracelet: Rolex "Oyster" bracelet of steel
 Buckle/Clasp: Rolex folding clasp of steel
 Circumference: app. 19 cm
 Year: 1962

Middle case no. 5512
Case back no. 5513
Movement no. 28191
Serial no. 818'902
End link no. 80
Bracelet no. 7206
Folding clasp no. 3 69

Accompanied by Rolex box and service papers from Rolex 2020. DKK 80,000 / € 10,500



1271

1271
ULYSSE NARDIN
 Model: Marine Perpetual
 Reference: 333-77
 Movement: Automatic, cal. 33.16.1136
 Material: Steel
 Diameter: 42 mm
 Strap/Bracelet: Ulysse Nardin bracelet of steel
 Buckle/Clasp: Ulysse Nardin folding clasp of steel
 Circumference: app. 18.5 cm
 Year: 2010s DKK 40,000–50,000 / € 5,350–6,700



1272

1272
PANERAI
Model: Radiomir 8 Days Oro Rosso
Reference: PAM538
Movement: Manual, cal. P.2002/10
Material: 18k rose gold
Diameter: 45 mm
Strap/Bracelet: Brown Panerai crocodile strap
Buckle/Clasp: Panerai folding clasp of 18k rose gold
Year: 2014

Accompanied by Panerai box, manuals, one additional used Panerai crocodile strap, two polishing cloths, receipt from Franz Jaeger & Me, original receipt of purchase and certificate from authorized retailer Klarlund 2014.

Items made of crocodile or alligator skin require a CITES export permit in order to be exported from Denmark to a country outside The European Union. Buyers residing outside the European Union are required to obtain this permit. More information is available upon request.

DKK 120,000–160,000 / € 16,000–21,500





1273

1273
OMEGA
Reference: CK 987
Movement: Manual chronograph, cal. 33.3
Material: Steel
Diameter: 38 mm
Strap/Bracelet: Brown Omega alligator strap
Buckle/Clasp: C-type buckle of steel
Year: 1944

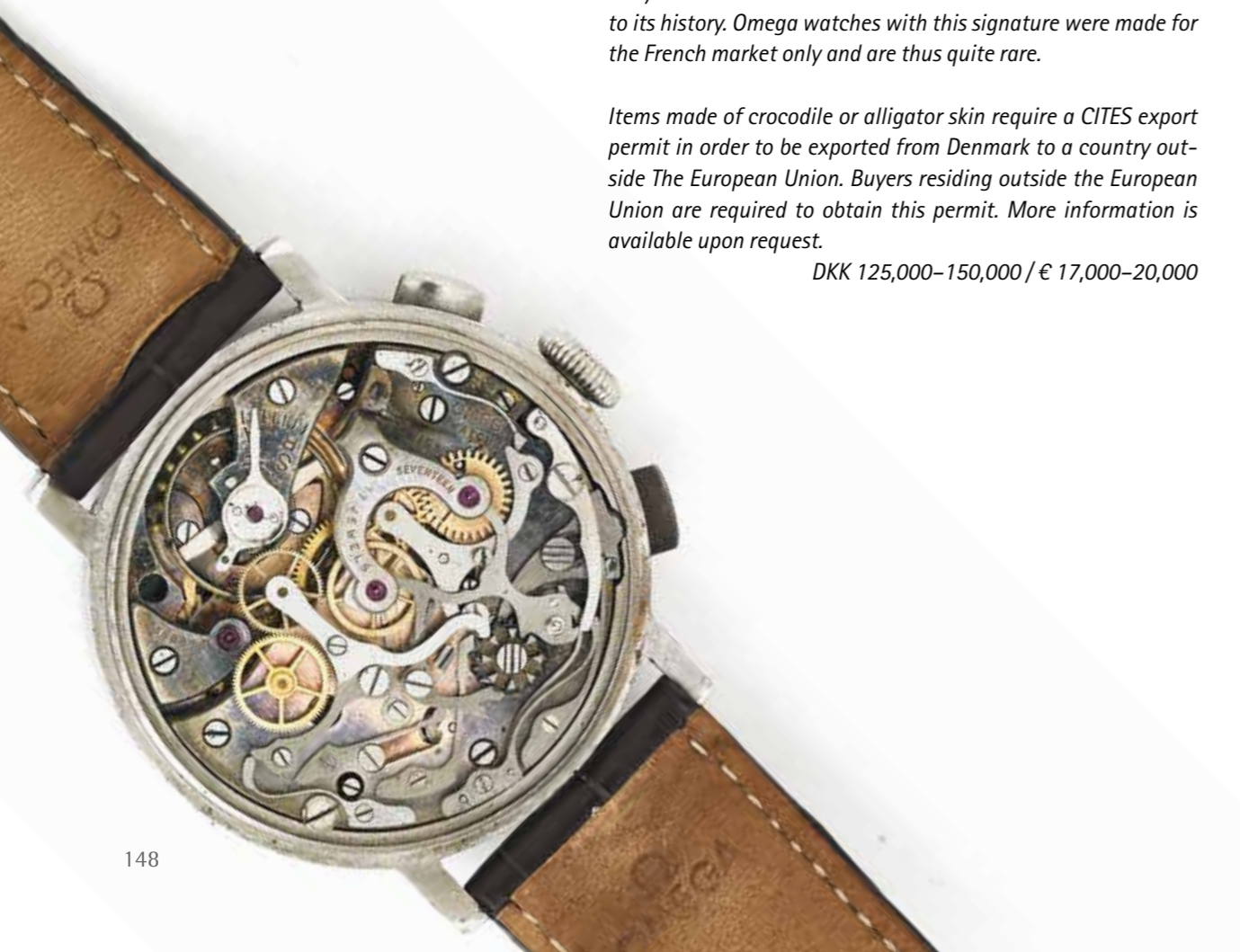
Case back no. 10'121'788.
Serial no. 9'389'818.

Accompanied by red Omega service box.

Although one usually thinks of the Speedmaster when talking about Omega chronograph watches, there are earlier and rarer timepieces from the legendary Swiss manufacturer to be found. Before the calibre 321, Omega's most famed chronograph movement was the calibre 33.3. This movement was, just like the calibre 321, made by Lemania. It was used between 1933-1952 and made in approximately 14,000 examples in total. The black gilt dial is unlike anything that is made today and is a testament to the incredible style and functional design language of the early 1940s. The dial also features "fab. Suisse" which is a hint to its history. Omega watches with this signature were made for the French market only and are thus quite rare.

Items made of crocodile or alligator skin require a CITES export permit in order to be exported from Denmark to a country outside The European Union. Buyers residing outside the European Union are required to obtain this permit. More information is available upon request.

DKK 125,000-150,000 / € 17,000-20,000



1274
BREITLING
Model: Navitimer
Reference: 81610
Movement: Automatic chronograph, cal. 7750
Material: Steel
Diameter: 41 mm
Strap/Bracelet: Breitling bracelet of steel
Buckle/Clasp: Breitling folding clasp of steel
Circumference: app. 19 cm
Year: 1990s

DKK 20,000 / € 2,700



1274

1275
BREITLING
Model: Navitimer
Reference: D1302212/B140
Movement: Automatic chronograph, cal. 7750
Material: 18k gold and steel
Diameter: 41 mm
Strap/Bracelet: Black calfskin strap
Buckle/Clasp: Breitling C-type buckle of steel
Year: 1999

Accompanied by Breitling box, hangtag, manuals and certificate from authorized retailer Shangri La Gibraltar 1999.

DKK 20,000-30,000 / € 2,700-4,050



1275



1276

1276
OMEGA
 Model: Constellation Double Eagle
 Reference: 1514.51.00
 Movement: Automatic chronograph, cal. 3313
 Material: Steel
 Diameter: 41 mm
 Strap/Bracelet: Integrated Omega bracelet of steel
 Buckle/Clasp: Omega folding clasp of steel
 Circumference: app. 19 cm
 Year: 2006

Serial no. 78'062'109
DKK 15,000–20,000 / € 2,000–2,700



1278

1278
ROLEX
 Model: Datejust "Pearlmaster"
 Reference: 80298
 Movement: Automatic, cal. 2235
 Material: 18k gold
 Diameter: 29 mm
 Strap/Bracelet: Rolex "Pearlmaster" bracelet of 18k gold
 Buckle/Clasp: Rolex folding clasp of 18k gold
 Circumference: app. 15.5 cm
 Year: 2005

Middle case no. 80298
Case back no. 2078
Movement no. 1'768'786
Serial no. D'800'374
End link no. 120
Folding clasp no. 72948

Accompanied by Rolex box, one additional link, manuals and copy of receipt of purchase from Mayors 2017.
DKK 100,000–125,000 / € 13,500–17,000



1277

1277
ROLEX
 Model: Oyster Perpetual
 Reference: 176200
 Movement: Automatic, cal. 2231
 Material: Steel
 Diameter: 27 mm
 Strap/Bracelet: Rolex "Oyster" bracelet of steel
 Buckle/Clasp: Rolex folding clasp of steel
 Circumference: app. 15 cm
 Year: 2018

Middle case no. 176200
Case back no. 2320
Movement no. OS'122'487
Serial no. F5'701'666
End link no. 70130

Accompanied by Rolex box, hangtag, receipt of purchase from Chronoexpert 2022 and certificate from authorized retailer Iwataya Honten 2018.
DKK 20,000–30,000 / € 2,700–4,050



1279

1279
CARTIER
 Model: "Art Deco"
 Movement: Manual
 Material: 18k gold and black enamel
 Measurements: 4.4 x 3.6 x 1.2 cm
 Signed: Cartier, Paris
 Weight: 78 g
 Year: 1920s

Provenance: King George II of Greece (1890 – 1947) and his descendants thereafter.

DKK 120,000-150,000 / € 16,000-20,000



1280
CARTIER
 Model: Tank Basculante
 Reference: 2386
 Movement: Quartz, cal. 059
 Material: Steel
 Diameter: 22 x 32 mm
 Strap/Bracelet: Black Cartier crocodile strap
 Buckle/Clasp: Cartier folding clasp of steel
 Year: 2001

Accompanied by Cartier box, manuals and certificate from authorized retailer El Corte Ingles, Las Palmas 2001.

Items made of crocodile or alligator skin require a CITES export permit in order to be exported from Denmark to a country outside The European Union. Buyers residing outside the European Union are required to obtain this permit. More information is available upon request.

DKK 15,000-20,000 / € 2,000-2,700



1280

1281
CARTIER
 Model: Rotonde 8 days
 Reference: 3324
 Movement: Manual, cal. 9910MC
 Material: 18k white gold
 Diameter: 42 mm
 Strap/Bracelet: Black Cartier crocodile strap
 Buckle/Clasp: Cartier folding clasp of 18k white gold
 Year: 2010s

Items made of crocodile or alligator skin require a CITES export permit in order to be exported from Denmark to a country outside The European Union. Buyers residing outside the European Union are required to obtain this permit. More information is available upon request.

DKK 60,000-80,000 / € 8,050-10,500



1281





1282
RECORDON, SPENCER & PERKINS
 A 20k gold pedometer wound pocket watch, white dial with Roman hour and Arabic minute numerals, blued hands, signed Recordon, Spencer & Perkins London, gilt movement, pierced and engraved cock with rose-cut diamond end-stone, oscillating weight signed Recordon, Spencer & Perkins, London, No 151. Back case marked with maker's mark IGF, marks for Neuchatel, K20 and indistinct number. The case opens by pulling the pendant upwards. London c. 1780-1785. Weight in total 139 g. Case diam. 55 mm. *Louis Recordon (active 1778-1824), a Swiss-born clockmaker took out patent No. 1249 for a pedometer-winding movement in 1780, shortly after arriving in London. Before moving to London, Recordon had worked for A.L. Perrelet in Le Locle and he knew and possibly worked with Abraham Louis Breguet in Paris at the end of 1778. Breguet developed his self-winding system in about 1780, around the same time as, but not before, Recordon and his patent. Recordon was Breguet's agent in London from 1780. Spencer & Perkins made the self-winding watches for Recordon in the beginning until Breguet took over. (source: Richard Watkins: The Origins Of Self-Winding Watches 1773-1779, second edition)*

DKK 40,000-60,000 / € 5,350-8,050



1282



1283

1283
PATEK PHILIPPE
 A 14k gold open-face pocket watch, golden dial with Arabic numerals, subsidiary seconds and blued hands, signed Patek, Philippe & Co, Genève, gilt movement signed Patek, Philippe & Cie, Genève, serial no. 185730, dust cover of gold signed Patek, Philippe & Cie, Genève, No. 185730. The back case signed PPhCo, back case and dust cover numbered 403005. 1915-1920. Weight in total 60 g. Case diam. 45 mm. Together with a gold watch chain. Weight 18 g. L. 32 cm. Original case included. (2)
 DKK 20,000-25,000 / € 2,700-3,350

1284
AUDEMARS, PIGUET & CO.
 A satinated platinum slim dress pocket watch, partly satinated silver-coloured dial with golden Arabic numerals at 3, 9 and 12 o'clock, subsidiary seconds, dial signed Audemars, Piguet & Co., movement signed Audemars, Piguet & C, Swiss, serial no. 42952, Nineteen 19 Jewels, Eight 8 Adjustements, back case signed and numbered 42952. 1930s. Weight 46.8 g. Case diam. 41 mm. Together with a platinum watch chain. Hallmarked with Swedish import marks. Weight 10.7 g. L. 42.5 cm. (2)
 DKK 12,000-15,000 / € 1,600-2,000



1284

INDEX

A

Albert, Gilbert 1225

B

Breguet 1258
Breitling 1274, 1275
Buccellati 1076
Bulgari 1030, 1034, 1265

C

Cartier 1009, 1013, 1016
1017, 1047, 1049
1279, 1280, 1281
Chanel 1228, 1229, 1230
Chopard 1031, 1087, 1088
1089, 1090, 1091
1092, 1255, 1267

D

Dulong, Marianne 1162, 1163, 1164

F

Faraone 1006

G

Girard-Perregaux 1254
Griegst, Arje 996, 997, 998
999, 1000, 1001
1002, 1003, 1004

H

Hancocks & Co. 1078
Hartmann's 1147
Hermès 1157
1231, 1232, 1234

I

IWC 1239, 1241, 1242

J

Jaeger-LeCoultre 1240
Juhl-Jørgensen, Marlene 995

K

Klarlund 1166
König, Jane 1167

L

Lapponia 1168
1169, 1171, 1173
Lynggaard, Ole 991, 993, 994
1021, 1132, 1133
1134, 1135, 1137

M

Michelsen, A. 1227
Movado 1262

N

Nielsen, Evald 1156, 1161

O

Omega 1261, 1273, 1276

P

Panerai 1272
Patek Philippe 1244, 1249, 1256
1264, 1266, 1268
Peyroula, Auguste 1221, 1222
Philippe, Patek 1283
Piaget 1263
Pomellato 1043

R

Rasmussen, Chr. 1029
Rolex 1235, 1236, 1237
1238, 1245, 1246
1247, 1248, 1250
1251, 1252, 1253
1257, 1259, 1269
1270, 1277, 1278
Rørvig, John 1170, 1172

S

Shamballa 1018, 1019, 1022

T

Tiffany & Co. 1005, 1011
Toftegaard 1213, 1217
Tudor 1260

U

Ulysse Nardin 1271

V

Vacheron Constantin 1243
Van Cleef & Arpels 1048, 1216
Vuitton, Louis 1233

W

Walter-Rasmussen, H. 1062
Wollny, V. 1113

Modern Art ^{and} Design

Live Auction 12-13 June 2023



Disse købsvilkår udgør Bruun Rasmussen Kunstauktioner A/S' ("BRK") købsvilkår for traditionelle auktioner og er gældende fra 1. februar 2017. BRK kan til enhver tid ændre købsvilkårene.

Ved bud accepterer budgiver/køber at være bundet af de til enhver tid gældende købsvilkår, som fremgår på bruun-rasmussen.dk. Købsvilkårene gælder både i forhold til erhvervsdrivende og forbrugere.

FØR AUKTIONEN

1 VURDERING AF GENSTANDE

1.1 Alle udbudte genstande er vurderet af BRK. Vurderingen er et skøn over det forventedeammerslag, jf. punkt 5.3. Vurderingen er baseret på tidligere salg af samme type genstande og erfaringer hos BRK. Hammerslag kan derfor falde højere eller lavere ud end vurderingen.

2 BESKRIVELSE AF GENSTANDE

- 2.1 Udbudte genstande præsenteres med fotos og beskrivelse i kataloger og på bruun-rasmussen.dk. Beskrivelsen foretages efter bedste overbevisning af BRK og ud fra en nøje undersøgelse efter den på salgstidspunktet herskende opfattelse blandt eksperter.
- 2.2 De udbudte genstande er af en alder og art, der bevirker, at de ofte er behæftede med slitage, mangler, beskadigelser og reparationer. Som udgangspunkt sælges alt som brugte genstande, og derfor indeholder beskrivelsen i kataloget og på bruun-rasmussen.dk ikke en redegørelse for ovenstående punkter eller genstandens stand.
- 2.3 I visse tilfælde vælger BRK at beskrive en genstands oprindelse. Det sker, hvis en tidligere ejer er offentlig kendt, og/eller hvis historien om et tidligere ejerskab belyser genstanden og dens art. Omvendt sker det også, at sådanne informationer udelades fra beskrivelsen, f.eks. for at imødekomme sælgers ønske om diskretion.
- 2.4 Vurderingen og beskrivelsen kan blive revideret forud for auktionen. Ændringer offentliggøres på bruun-rasmussen.dk

3 EFTERSYN

- 3.1 Udbudte genstande udstilles op til auktionen i et showroom hos BRK. Potentielle budgivere opfordres til at se genstanden efter i detaljer og har selv ansvaret for at forvise sig om dens stand på disse eftersyn, hvor der også er mulighed for at rådføre sig hos vurderingssagkyndige.
- 3.2 Hvis en potentiel køber ikke har mulighed for at besigtige genstanden ved selvsyn, kan der i de fleste tilfælde udfærdiges en konditionsrapport. Beskrivelsen heri er foretaget efter BRK's bedste overbevisning, men er ikke baseret på videnskabelige undersøgelser. En konditionsrapport tjener blot som identifikation og er ment som en hjælp til budgivere, der ikke selv har mulighed for at besigtige genstanden på eftersynet.

UNDER AUKTIONEN

4 BRK'S ROLLE

- 4.1 Salget af en genstand formidles af BRK på vegne af sælger. BRK afhænder altid udbudte genstande til den højst mulige pris under budgivningen.
- 4.2 Udbudte genstande kan have en med sælger aftalt mindstpris, hvorunder den ikke kan sælges. Denne pris er fortrolig.
- 4.3 De traditionelle auktioner overværes af en af Justitsministeriet beskikket auktionsleder, der sikrer, at auktionerne går retmæssigt for sig.

5 BUDGIVNING

- 5.1 Auktionerne afvikles i danske kroner. De tilnærmelsesvis beløb i euro/US dollar vil blive oplyst på skærme i auktionssalen og i øvrigt på opfordring.
- 5.2 Auktionarius bestemmer overbuds størrelse og i hvilket tempo, auktionen afvikles. Overbud stiger normalt med 5 % - 10 % i forhold til det foregående bud. Normalt sælges der 50-100 katalognumre i timen.
- 5.3 Hammerslag betegner både det forhold, at auktionarius slår med hammeren og derved markerer budgivningens afslutning, og den pris (budsum), den udbudte genstand sælges til. Se punkt 7 vedrørende beløb, der tillægges hammerslaget.
- 5.4 Køber er den budgiver, der opnår hammerslag. Ved hammerslaget indgås på baggrund af disse købsvilkår en bindende købs-/salgsaftale.
- 5.5 Bydes på andres vegne, hæfter budgiver som selvskyldnerkautionist for handlen.
- 5.6 Genstande købes som beset, og køber har uanset budtype ingen fortrydelsesret, heller ikke efter forbrugeraftaleloven.
- 5.7 Budgiver skal efter anvisninger fra BRK identificere sig og dokumentere sin betalingsdygtighed, f.eks. ved registrering af gyldigt betalings-/kreditkort, bankgaranti eller indbetaling af depositum.
- 5.8 BRK kan nægte at acceptere et bud, hvis en tilstrækkelig sikkerhed for betaling mangler, eller hvis budgiver tidligere har misligholdt betalingsforpligtigelser ved køb hos BRK.
- 5.9 Auktionslederen træffer i samråd med auktionarius afgørelse i alle tvivlstilfælde omkring budgivningen.

6 BUDTYPER

- 6.1 Der er følgende muligheder for at afgive bud:
- PERSONLIGT FREMMØDE:**
Registrering og udlevering af bydeskilt foregår ved indgangen til auktionssalen. Når budgiver ønsker at byde, signaleres dette til auktionarius ved at række bydeskiltet i vejret og tydeligt fremvise dets nummer.
- KOMMISSIONSBUD:**
Det ønskede maksimale bud kan afgives via bruun-rasmussen.dk frem til auktionens start eller pr. e-mail, fax eller telefon, så budet er modtaget senest 24 timer forud for auktionens start. En kommissionær byder på budgivers vegne inden for rammerne af det ønskede maksimalbud og vil altid afgive lavest muligt overbud.
- TELEFONBUD:**
I forhold til visse genstande er der mulighed for at blive ringet op af en medarbejder fra BRK, der vil byde på budgivers vegne under auktionen. Servicen kan bestilles via bruun-rasmussen.dk indtil tre timer før auktionens start.

LIVE BIDDING:

Det er muligt at følge auktionen live og byde med via bruun-rasmussen.dk

FORAUKTION:

Visse traditionelle auktioner indledes med en net-auktion. De højeste bud på net-auktionen danner udgangspunktet på den efterfølgende traditionelle auktion.

EFTER AUKTIONEN

7 BELØB, DER TILLÆGGES HAMMERSLAGET

- 7.1 I tillæg til hammerslaget, jf. punkt 5.3, skal køber for den enkelte genstand betale købersalær og, hvis betingelserne er opfyldt, de øvrige beløb, der er nærmere beskrevet nedenfor. Det samlede beløb, som køber skal betale til BRK, benævnes "købesummen".
- 7.1.1 Købersalær: Hammerslaget tillægges et salær til BRK. På de traditionelle auktioner udgør salæret 25,6 % af hammerslaget + moms af salæret, i alt 32 %. For frimærker og mønter udgørsalæret 20 % af hammerslaget + moms af salæret, i alt 25 %.
- 7.1.2 "LIVE bidding": BRK's "LIVE bidding"-software via bruun-rasmussen.dk er gratis at benytte for budgivere.
- 7.1.3 Fuldmoms: Visse genstande handles efter de gældende regler om fuldmoms. Her beregnes der moms på 25 % af både hammerslag og salær. Disse genstande er i beskrivelsen i kataloget og på bruun-rasmussen.dk mærket med symbolet "*" eller med teksten: "Dette emne handles i fuldmoms".
- 7.1.4 Kunstnerafgift: Ifølge dansk lovgivning om ophavsret skal der opkræves kunstnerafgift (følgeretsvederlag) for værker af nyere danske og visse udenlandske kunstnere, som enten er nulevende eller ikke har været døde i mere end 70 år. Kunstnerafgiften opkræves på vegne af VISDA. Disse værker er i kataloget mærket med "ARR" (Artist's Resale Right) og på bruun-rasmussen.dk med teksten "Dette emne er belagt med kunstnerafgift". Kunstnerafgiften tillægges hele hammerslaget + salær (ekskl. moms), når beløbet overstiger 300 euro, som angivet nedenfor:

Hammerslag + salær (ekskl. moms)	Betalingssats
300,01 - 50.000 euro	5%
50.000,01 - 200.000 euro	3%
200.000,01 - 350.000 euro	1%
350.000,01 - 500.000 euro	0.5%
over 500.000 euro	0.25%

Kunstnerafgiften kan ikke overstige 12.500 euro (ekskl. moms) for den enkelte genstand. Afgiften skal betales i danske kroner, og omregningskursen (EUR/DKK) fastsættes af VISDA.

- 7.1.5 Betalings-/kreditkortgebyr: BRK forbeholder sig ret til at opkræve de af indlønningsselskaberne pålagte betalings-/kreditkortgebyrer. Satserne fremgår ved budgivning via bruun-rasmussen.dk og ved betaling.

8 BETALINGSFRIST

- 8.1 Købesummen forfalder til betaling ved hammerslaget, og køber har herefter otte dage til at betale købesummen til BRK.

9 BETALINGSMÅDER

- 9.1 Betaling kan ske på følgende måder:
- A: Med betalings-/kreditkort (Dankort, Visa, MasterCard, Maestro, Diners Club, JCB og China UnionPay) eller kontant (op til 19.999 kr.) i auktionssalen eller efterfølgende i en afdeling hos BRK. Bemærk, at vi ikke modtager 500-eurosedler.

B: Med betalings-/kreditkort (Dankort, Visa, MasterCard, Maestro, Diners Club og JCB) på bruun-rasmussen.dk under købers personlige side.

C: Via bankoverførsel til BRK's konto i Danske Bank: 4183 4310970638 · Swift/BIC: DABADKKK · IBAN: DK4130004310970638.

10 MOMSFRITAGELSE, -BETALING OG -DEPONERING

- 10.1 Visse købere kan vælge hvilken momstype, der skal være gældende for handlen. Valget skal meddeles BRK senest to hverdage efter købet og kan ikke omgøres.
- A: Momsregistrerede virksomheder i Danmark kan vælge, at handlen skal ske efter reglerne om fuldmoms, jf. punkt 7.1.3.
- B: Momsregistrerede virksomheder i et andet EU-land kan fritages for dansk moms, når det kan dokumenteres, at genstanden er transporteret til den udenlandske adresse, som køber har oplyst over for BRK, og som er anført på fakturaen. I sådanne tilfælde skal der afregnes moms efter de gældende regler i det land, hvor køber er momsregistreret. Det tilrådes at søge oplysning hos de lokale myndigheder. Køber kan undlade at gøre brug af muligheden for momsfrigtagelse og i stedet betale dansk brugtmoms/fuldmoms.
- C: Købere med bopæl uden for EU kan fritages for dansk moms, når det kan dokumenteres, at genstanden er transporteret ud af EU. BRK udsteder så vidt muligt og mod gebyr de fornødne eksportpapirer, som skal fremvises ved toldmyndighederne. Køber kan undlade at gøre brug af muligheden for momsfrigtagelse og i stedet betale dansk brugtmoms/fuldmoms.
- 10.2 Momsregistrerede virksomheder i et andet EU-land og købere med bopæl uden for EU skal deponere den danske moms af fakturabeløbet hos BRK, indtil eksporten er gennemført på dokumenteret lovligt vis. Foretages eksporten af en af BRK godkendt speditør, skal momsens ikke deponeres. Se listen over godkendte speditører på bruun-rasmussen.dk

11 OVERSKRIDELSE AF BETALINGSFRIST

- 11.1 Overskrides en betalingsfrist, herunder fristen i punkt 8, opkræves morarenter, som beregnes efter Nationalbankens officielle udlånsrente + 8 % om året af det skyldige beløb.
- 11.2 Betales købesummen inkl. renter ikke senest ti dage efter, at der er fremsat påkrav herom, er BRK berettiget til at søge købesummen betalt ved modregning i depositum/ved træk på bankgaranti eller at hæve købet.
- 11.3 Hæves købet, er BRK berettiget til at sælge genstanden på en ny auktion og kræve omkostningerne og en eventuel difference mellem hammerslag (samt salær), der er opnået på de to auktioner, betalt af den misligholdende køber.
- 11.4 Alle forfaldne krav (inkl. omkostninger), som ikke betales rettidigt, kan BRK i tillæg til inkasso søge inddrevet på følgende måder:
- A: For købers regning sælge genstande indleveret til auktion af eller på vegne af køber. Salget kan gennemføres uden hensyntagen til en aftalt mindstepris. Genstande indleveret til auktion kan ikke kræves udleveret, så længe forfalden gæld henstår ubetalt.
- B: Inddrage købers tilgodehavende hos BRK, herunder tilgodehavende fra salg af genstande indleveret af eller på vegne af køber, uanset om et sådant tilgodehavende stammer fra auktionssalg, som ligger forud for eller efter tidspunktet for købers misligholdelse.

12 AFHENTNING OG UDLEVERING

- 12.1 Ejendomsretten til en købt genstand overgår til køber, når hele købesummen inkl. eventuelle renter og gebyrer er betalt, og først herefter kan udlevering af genstanden finde sted.
- 12.2 Ved udlevering af en købt genstand forbeholder BRK sig retten til at kræve tilfredsstillende dokumentation for, at den person, som ønsker genstanden udleveret, enten selv er køberen eller er bemyndiget af køberen til at få genstanden udleveret.
- 12.3 Udlevering af visse våben kræver forevisning af gyldig våbentilladelse. Sådant krav er angivet med teksten "Køb af dette emne kræver forevisning af gyldig våbentilladelse" i kataloget og på bruun-rasmussen.dk
- 12.4 Købte genstande henligger fra hammerslaget for købers regning og risiko. Afhentning skal ske senest otte hverdage efter sidste auktionsdag.
- 12.5 Foretages afhentningen ikke rettidigt, transporteres de købte genstande til et lager for købers regning og risiko. Transporten koster 150 kr. inkl. moms pr. genstand, og opbevaringen koster 150 kr. inkl. moms pr. genstand pr. påbegyndt uge. Henligger en genstand uafhentet i så lang tid, at lagerlejen overstiger genstandens værdi, er BRK berettiget til for købers regning og risiko og uden hensyn til mindstepris at bortauktionere genstanden eller sælge den underhånden. Køber hæfter fortsat for udgifter til transport og lagerleje, der ikke dækkes ved sådant salg.
- 12.6 I henhold til gældende hvidvasklovgivning skal køber i visse tilfælde udlevere identitetsoplysninger og fremvise billed-id til BRK, før køber kan få den købte genstand i sin besiddelse

13 FORSENDELSE

- 13.1 Er køber forhindret i selv at afhente en genstand, tilbyder BRK for købers regning og risiko at emballere og arrangere forsendelse enten med post eller speditør. Se punkt 12.2 angående legitimation.

14 EKSPORTTILLADELSE

- 14.1 For at sikre at dansk kulturarv af afgørende betydning forbliver i Danmark, kan Kulturværtdiudvalget for visse genstandes vedkommende nedlægge eksportforbud. Hvis køber ønsker at eksportere en genstand ud af Danmark, hvor der er nedlagt et eksportforbud, annulleres købet, og Kulturværtdiudvalget er forpligtet til at overtage genstanden til den pris, der blev opnået på auktionen. Køber kan ikke rejse krav mod BRK som følge af, at et eksportforbud bliver nedlagt.
- 14.2 Visse genstande er omfattet af Washingtonkonventionen, også kendt som CITES, der har til formål at stoppe ulovlig handel med genstande fremstillet af udryddelsestruede vilde dyr og planter. Såfremt en genstand er omfattet af Washingtonkonventionen, CITES, liste 1, vil det fremgå af beskrivelsen på bruun-rasmussen.dk og være markeret med symbolet "©" i kataloget. Følgende regler gør sig gældende:
 - A: Genstande omfattet af Washingtonkonventionen, CITES, liste 1, må kun handles, når der foreligger en dispensation i form af et såkaldt CITES-salgscertifikat. BRK indhenter det fornødne certifikat fra Naturstyrelsen, der tillader handel og eksport til lande inden for EU. Dog kan genstande, som er færdigforarbejdet før 1947, frit handles inden for EU uden et certifikat.
 - B: Det er alene genstande omfattet af Washingtonkonventionen, CITES, liste 1, som er særkilt markeret på bruun-rasmussen.dk og i kataloget. Genstande omfattet af Washingtonkonventionen, CITES, liste 2, der frit kan sælges og transporteres inden for EU, er ikke særkilt markeret.
 - C: Ved eksport til lande uden for EU skal der uanset årstallet for genstandens færdigforarbejdning altid indhentes en CITES-reeksporttilladelse fra Naturstyrelsen,

når genstanden er omfattet af Washingtonkonventionen, CITES, liste 1 og 2. Denne eksporttilladelse kan normalt indhentes problemfrit, når liste 1-genstande enten er solgt med et CITES-salgscertifikat eller er færdigforarbejdet før 1947. Liste 2-genstande opnår ligeledes normalt problemfrit en reeksporttilladelse. Eventuelle omkostninger, der opkræves at de danske myndigheder i forbindelse med udstedelse af en reeksporttilladelse, vil blive pålagt købers faktura.

D: I forbindelse med eksport til lande uden for EU kan særlige regler gøre sig gældende ifm. den efterfølgende import, og køber opfordres til at indhente oplysninger fra egne myndigheder.

15 MANGLER VED KØBTE GENSTANDE

- 15.1 Købelovens mangelsregler kan finde anvendelse. Nedenfor er angivet et ikke udtømmende uddrag af købers mangelsbeføjelser.
- 15.2 Køber er berettiget til at annullere et køb, hvis beskrivelsen har været behæftet med væsentlige fejl, der har ført til et højere hammerslag, end en korrekt beskrivelse ville have resulteret i. I sådanne tilfælde vil den samlede købesum blive refunderet. Køber kan ikke kræve betaling af renter af købesummen eller kræve dækning af anden udgift eller tab.
- 15.3 Et køb kan ikke annulleres, og køber kan ikke kræve købesummen refunderet eller rejse noget andet krav mod BRK, hvis beskrivelsen af genstanden er i overensstemmelse med punkt 2, eller hvis en påvisning af falskneri havde krævet brug af videnskabelige metoder, der enten ikke var tilgængelige på salgstidspunktet, havde været uforholdsmæssigt omkostningskrævende at anvende eller havde ført til beskadigelse af den pågældende genstand.
- 15.4 Krav om annullering af et køb skal meddeles BRK, når køber er blevet bekendt med det forhold, der berettiger køber til at annullere købet, dog senest to år fra den seneste afhentningsdato efter punkt 12.4. Den købte genstand skal returneres til BRK i samme stand som på hammerslagstidspunktet. Overholdes disse betingelser ikke, mister køber retten til at annullere købet og kan ikke kræve købesummen refunderet. Køber er selv ansvarlig for at betale de omkostninger, der er forbundet med returnering af genstanden.

16 INDSIGELSE- OG ANSVARSBEGRÆNSNING

- 16.1 BRK tager forbehold for fejl, tekniske vanskeligheder samt udefrakommende misbrug eller forstyrrende påvirkning under auktionen. Budgetgiver kan ikke rejse noget krav mod BRK som følge heraf.
- 16.2 Køber er i alle tilfælde selv ansvarlig for korrekt betaling af moms og andre afgifter, gebyrer mv. i overensstemmelse med danske og udenlandske regler.
- 16.3 Medmindre andet fremgår af disse købsvilkår, kan BRK aldrig blive ansvarlig for budgetgivers/købers driftstab, avancetab, andre indirekte tab eller følgeskader.

17 PERSONDATAPOLITIK

- 17.1 Det er vigtigt for BRK at sikre fortrolighed og sikkerhed omkring budgetgivers/købers personlige oplysninger. Persondatapolitikken fremgår af bruun-rasmussen.dk.

18 KLAGE, TVISTLØSNING OG LOVVALG

- 18.1 Har budgetgiver/køber en klage, kan der altid rettes henvendelse til BRK.
- 18.2 Lykkes det ikke at finde en løsning, kan forbrugere sende en klage til Nævnenes Hus, Toldboden 2, 8800 Viborg, e-mail: naevneneshus.dk. Forbrugere med bopæl i et andet EU-land end Danmark kan klage til EU-Kommissionens online klageportal via hjemmesiden: <http://ec.europa.eu/odr>.
- 18.3 Tvister skal indbringes i Danmark ved Københavns Byret, jf. dog punkt 18.2. I forbrugerforhold gælder de ufravigelige værmetingsregler.

Bruun Rasmussen Kunstauktioner

Rev. 08.22

CONDITIONS OF PURCHASE – LIVE AUCTIONS

These conditions of purchase represent Bruun Rasmussen Kunstauktioner A/S' ("BRK") conditions of purchase for live auctions and are effective from 1 January 2017. BRK may modify the conditions of purchase at any time.

By bidding, the bidder/buyer accepts the current conditions of purchase as they appear on bruun-rasmussen.dk. The conditions of purchase are applicable to both business owners and consumers.

BEFORE THE AUCTION

1 VALUATION OF ITEMS

- 1.1 All the offered items are valued by BRK. The valuation is an estimate based on the expected hammer price, see paragraph 5.3. The estimate is based on the previous sale of similar items as well as BRK's past experience. The hammer price can therefore be higher or lower than the estimated price.

2 DESCRIPTION OF ITEMS

- 2.1 Items up for auction are presented with photographs and descriptions in catalogues and on bruun-rasmussen.dk. The description is worded according to the best of BRK's knowledge and based on detailed research in accordance with the prevailing views among experts at the time of sale.
- 2.2 The items up for auction are of an age and nature that often mean that they are in a worn, repaired or damaged condition. As a starting point everything is sold as used items. For this reason, the descriptions in the catalogue or at bruun-rasmussen.dk do not include a statement regarding the above or the condition of the item.
- 2.3 In some cases, BRK may choose to describe an item's provenance. Such a description is made if a former owner is publicly known and/or if the story of previous ownership sheds further light on the item and its background. In other cases, such information is left out of the description, for instance to meet the seller's wish for privacy.
- 2.4 It is possible that the estimate and description are revised prior to the auction. Changes are published on BRK's website.

3 PREVIEW

- 3.1 Items up for auction are presented prior to the auction in one of BRK's showrooms. Potential bidders are encouraged to inspect the items closely and are responsible for determining the condition of the items at these previews, where they also have the opportunity to consult with the valuation experts.
- 3.2 If a potential buyer does not have the opportunity to inspect the item personally, a condition report can be drafted in most cases. The description in this report has been made according to BRK's honest conviction but is not based on scientific studies. A condition report only serves as an identification and is meant as an aid to bidders who do not have the opportunity to inspect the item at the preview.

DURING THE AUCTION

4 THE ROLE OF BRK

- 4.1 The sale of an item is facilitated by BRK on behalf of the seller, and BRK always sells items up for auction at the highest price offered during the bidding round.

- 4.2 Items up for auction can have a reserve price that has been agreed upon with the seller. The price is confidential and the item cannot be sold below this price.

- 4.3 The live auctions are presided over by one of the Danish Ministry of Justice's appointed auctioneers, ensuring that the auctions proceed correctly and lawfully.

5 BIDDING

- 5.1 The currency used while the auctions take place is Danish kroner. The approximate amount in euro/US dollars is shown on screens in the saleroom and also on request.
- 5.2 The auctioneer determines the size of the bid increment and the pace of the auction. Bid increments usually rise by 5% - 10% compared to the previous bid. Approximately 50-100 auction lots are sold per hour.
- 5.3 The hammer price refers both to the gavel used by the auctioneer that signifies the end of a bidding round on an item and to the price (bidding amount) that the item up for auction is sold for. See paragraph 7 regarding amounts added to the hammer price.
- 5.4 The buyer is the bidder that submits the highest bid, thereby obtaining the hammer price. At the moment the hammer price is determined, a binding purchase/sale agreement is entered into based on these conditions of purchase.
- 5.5 If bids are made on behalf of others, the bidder serves as surety for the transaction.
- 5.6 Items are purchased in their present state and condition, and regardless of the type of bidding the buyer has no right to cancel his purchase, neither under the Danish Consumer Contracts Act.
- 5.7 Bidders are required, in accordance with BRK's instructions, to identify themselves and document their ability to pay, for instance by registration of a valid debit/credit card, bank guarantee or a deposit.
- 5.8 BRK may refuse to accept a bid if a sufficient guarantee of the bidder's ability to pay is not provided, or if the bidder has previously defaulted on payment obligations on purchases from BRK.
- 5.9 The overseeing auctioneer will, in consultation with the auctioneer at the podium, decide what to do in matters of dispute concerning a bidding round.

6 TYPES OF BIDDING

- 6.1 Bidding options:
 - IN PERSON:**
Registration and obtaining the bidding paddle take place at the entrance to the saleroom. When the bidder wishes to bid, it is signalled to the auctioneer on the podium by raising the bidding paddle in the air and clearly displaying its number.
 - COMMISSION BIDS:**
The intended maximum bid can be submitted via bruun-rasmussen.dk until the start of the auction or by e-mail, fax or phone, so that the bid is received no later than 24 hours prior to the start of the auction. A commission agent bids on behalf of the bidder within the limits of the stated maximum bid. The commission agent will always bid the lowest possible amount to achieve the hammer price.

TELEPHONE BID:

With certain items it is possible to have a BRK employee call the bidder over the phone. The employee will then bid on behalf of the bidder during the auction. The service can be booked via bruun-rasmussen.dk up until three hours before the auction is set to begin.

LIVE BIDDING:

It is possible to follow the auction live and bid on the auction lots via bruun-rasmussen.dk.

PRE-AUCTION:

Some live auctions are preceded by an online auction. The highest bids from the online auction then represent the starting bids at the following live auction.

AFTER THE AUCTION

7 AMOUNTS ADDED TO THE HAMMER PRICE

- 7.1 In addition to the hammer price, see paragraph 5.3, the buyer pays a buyer's premium for the individual items as well as the other amounts described below if the conditions for these are applicable. The total amount that the buyer pays to BRK is called the "purchase price".
- 7.1.1 Buyer's Premium: The hammer price always includes an additional fee to BRK. At the live auctions, the fee is 25,6% of the hammer price + VAT of the fee, 32% in total. For stamps and coins, the fee is 20% of the hammer price + VAT of the fee, a total of 25%.
- 7.1.2 "LIVE Bidding": BRK's "LIVE Bidding" software is free to use for bidders on bruun-rasmussen.dk.
- 7.1.3 Full VAT: Certain items are sold at auction in accordance with the current rules regarding full VAT. In such a situation, a VAT of 25% is imposed on both the hammer price and the buyer's premium. These items are marked in the catalogue and on bruun-rasmussen.dk with the symbol "*", or with the text: "This item is subject to full VAT".
- 7.1.4 Artist's Resale Right: In accordance with Danish copyright law, a royalty fee covering the Artist's Resale Right has to be charged for works by newer Danish artists, and some foreign artists, who are either alive or have not been dead for more than 70 years. The royalty fee covering the Artist's Resale Right is charged on behalf of VISDA (Visual Rights Denmark). These works are marked "ARR" in the printed catalogue, and on bruun-rasmussen.dk the description of the works includes the text: "This lot is subject to the Artist's Resale Right". The royalty fee covering the Artist's Resale Right is added to the hammer price + the buyer's premium (excluding VAT) if the amount exceeds EUR 300, as indicated below:

Hammer price + buyer's premium (ex. VAT)	Payment Rate
300,01 - 50,000 euro	5%
50,000,01 - 200,000 euro	3%
200,000,01 - 350,000 euro	1%
350,000,01 - 500,000 euro	0.5%
over 500,000 euro	0.25%

The royalty fee covering the Artist's Resale Right cannot exceed EUR 12,500 (excluding VAT) for each item. The fee must be paid in Danish kroner, and the conversion rate (EUR/DKK) is set by VISDA.

- 7.1.5 Debit/Credit Card Fee: Amounts Added to the Hammer Price: BRK reserves the right to charge the debit/credit card fees imposed by the payment services companies. The rates will appear when bidding on bruun-rasmussen.dk and at payment.

8 PAYMENT DEADLINE

- 8.1 The purchase price falls due after the hammer price has been determined, and then the buyer has eight days to pay BRK the purchase price.

9 PAYMENT METHODS

- 9.1 The payment can be made in the following ways:
- A: With debit/credit card (Visa, MasterCard, Maestro, Diners Club, China UnionPay and JCB) or cash (up to DKK 19.999) in the saleroom or subsequently at one of

BRK's locations. Please note that we do not accept EUR 500 banknotes.

- B: With debit/credit card (Dankort, Visa, MasterCard, Diners Club and JCB) via BRK's website on the buyer's personal page.
- C: By bank transfer into BRK's account with Danske Bank: 4183 4310970638 - Swift/BIC: DABADKKK - IBAN: DK4130004310970638.

10 VAT EXEMPTION, PAYMENT & DEPOSIT

- 10.1 Some buyers can choose which type of VAT should apply to the transaction. The choice has to be communicated to BRK no later than two working days after the purchase and cannot be changed subsequently.
- A: Businesses in Denmark registered for VAT can decide that the transaction is to be conducted in accordance with the rules for full VAT, see paragraph 7.1.3.
- B: Businesses registered for VAT in another EU Member State can be exempted from paying Danish VAT if it can be proved that the item has been transported to the foreign address that the buyer has registered with BRK and which is written on the invoice. In such cases, the VAT should be settled according to the rules applicable in the country where the buyer is registered for VAT. It is advisable to consult with the local authorities. The buyer can decide not to be exempt from regular VAT and instead pay Danish VAT on second-hand goods/full VAT.
- C: Buyers residing outside the EU can be exempted from Danish VAT if it can be proved that the item has been transported out of the EU. To the extent possible and for a fee, BRK can issue the necessary export documents for the customs authorities. The buyer may decide not to be exempt from regular VAT and instead pay Danish VAT on second-hand goods/full VAT.
- 10.2 Companies registered for VAT in another EU Member State and buyers residing outside the EU must deposit the Danish VAT on the amount invoiced with BRK until the export process has been completed in a documented, lawful fashion. If the export is undertaken by one of BRK's authorized forwarding agents, the VAT does not have to be deposited. See the list of authorized forwarding agents on bruun-rasmussen.dk.

11 OVERDUE PAYMENTS

- 11.1 If payment is made after a deadline, including the deadline specified in paragraph 8, interest on overdue payments will be charged and estimated in accordance with the Danish Central Bank's official lending rate + 8% per year on the amount due.
- 11.2 If the purchase price, including interest, has still not been paid ten days after the demand for payment has been made, BRK is entitled to seek the purchase price paid by making a set-off against the deposit/by drawing on the bank guarantee or to cancel the purchase.
- 11.3 If the purchase is cancelled, BRK is entitled to sell the item at a new auction and demand the costs and any difference between the new and the earlier hammer price (including the buyer's premium) covered by the defaulting buyer.
- 11.4 In addition to debt collection, BRK may seek recovery of all due claims (including costs) not paid in a timely manner in the following ways:
- A: Making the buyer cover the costs of selling items consigned to auction by or on behalf of the buyer. The sale can be conducted without regard to an agreed reserve price. Items consigned for auction cannot be collected as long as overdue debts are unpaid.
- B: Seizing the buyer's remaining balance with BRK, including the balance from the sale of items consigned by or on behalf of the buyer, regardless of whether such receivables derive from auction sales prior to or after the date of the buyer's default on the payment.

12 PICK-UP & COLLECTION

- 12.1 The title to a purchased item passes to the buyer when the full purchase price, including any interest and fees, has been paid, and only then can the collection of an item take place.
- 12.2 In connection with the collection of a purchased item, BRK reserves the right to demand satisfactory documentation that the person who wants to pick up the item is either the buyer himself/herself or authorized by the buyer to receive the item on his/her behalf.
- 12.3 The collection of certain weapons requires presentation of a valid weapons certificate. Items with such requirements are listed with the text: "The purchase of this item requires the presentation of a valid weapons certificate" in the catalogue and on bruun-rasmussen.dk.
- 12.4 Purchased items are stored after the auction at the buyer's expense and risk. Pick-up must take place no later than eight working days after the last auction day.
- 12.5 If the item(s) is/are not picked up on time, the purchased items will be transported to a warehouse at the buyer's risk and expense. The transport costs are DKK 150 including VAT per item and the storage costs are DKK 150 including VAT per item for each week or part of a week. If an item is left unclaimed for an amount of time that results in the storage costs exceeding the value of the item, BRK will be entitled to, at the buyer's expense and risk and without regard to the reserve price, sell the item at an auction or privately. The buyer is still liable for the costs of transportation and storage not covered by such sale.
- 12.6 In accordance with current anti-money laundering laws, the buyer must in certain cases submit personal information and present a photo ID to BRK before the buyer can have the purchased item placed in his possession.

13 SHIPPING

- 13.1 If the buyer is unable to pick up the purchased item, BRK offers to pack and arrange delivery either by mail or by freight forwarder at the buyer's risk and expense. See paragraph 12.2 regarding identification.

14 EXPORT LICENSE

- 14.1 To ensure that Danish cultural heritage of vital importance remains in Denmark, the Danish Cultural Assets Commission can place an export ban on certain items. If the buyer wishes to export an item that is subject to an export ban in Denmark, the purchase will be cancelled and the Danish Cultural Assets Commission is obliged to acquire ownership of the item for the price obtained at auction. The buyer cannot raise any claims against BRK as a result of an export ban.
- 14.2 Certain items are included in the Washington Convention, also known as CITES. The purpose of CITES is to stop the trade of items made with endangered species and flora. If the item is included in the Washington Convention, CITES, Appendix 1, this will appear in the description of the item on bruun-rasmussen.dk and be marked with the symbol "☉" in the catalogue. The following rules are applicable:
- A: Items that are included in the Washington Convention, CITES, Appendix 1, can only be traded when a dispensation in the form of a CITES certificate has been obtained. BRK obtains the required certificate from the Danish Nature Agency that allows trade and export to countries within the EU. Items that were produced before 1947 can, however, be freely traded within the EU without a certificate.
- B: It is only items included in the Washington Convention, CITES, Appendix 1 that are marked individually on bruun-rasmussen.dk and in our catalogue. Items included in the Washington Convention, CITES, Appendix 2, which can be freely sold and transported within the EU, are not individually marked.
- C: Export to countries outside the EU must, regardless of the year of the item's production, always procure a CITES re-export permit from the Danish Nature Agency if the item is included in the Washington Convention, Appendix 1 and 2. This export permit can usually be

obtained without problems, if the item is either sold with a CITES certificate or was made prior to 1947. Appendix 2 items usually also receive a re-export permit without problems. Any fees charged by the Danish authorities in connection with the issuance of a re-export permit will be added to the buyer's invoice.

D: In connection with export to other countries outside the EU, special rules may apply concerning the subsequent import, and the buyer is encouraged to consult the relevant local authorities about this issue.

15 DEFECTS IN THE PURCHASED ITEMS

- 15.1 The lack of conformity rules of the Danish Sale of Goods Act may apply. Below is a non-exhaustive excerpt of the buyer's remedies in regard to lack of conformity.
- 15.2 The buyer is entitled to cancel a purchase if the description contained significant errors that have led to a higher hammer price than a correct description would have resulted in. In such cases, the total purchase price will be refunded. The buyer cannot demand payment of interest on the purchase price or demand payment of any other expenses or losses.
- 15.3 A purchase cannot be cancelled and the buyer cannot demand a refund of the purchase price or raise any other claims against BRK if the description of the item is in compliance with paragraph 15.2. The same applies if evidence of forgery has required the use of scientific methods that were either not available at the time of sale, were excessively costly to use or led to the damage of the item in question.
- 15.4 Claims for a cancellation of a purchase must be notified to BRK when the buyer has discovered the fact that entitles the buyer to cancel the purchase. This notice, however, has to be given no later than two years after the final pick-up date according to paragraph 12.4. The item purchased must be returned to BRK in the same condition as it was on the day it was sold at auction. If these conditions are not met, the buyer loses the right to cancel the purchase and cannot claim a refund of the purchase price. The buyer is responsible for paying the costs associated with the return of the item.

16 OBJECTIONS & LIMITATIONS OF LIABILITY

- 16.1 BRK is aware that errors, technical difficulties and external abuse or disruptive influences may occur during the auction. Bidders cannot raise any claims against BRK as a result of such events.
- 16.2 The buyer is always responsible for the correct payment of VAT and other costs, fees etc. in accordance with Danish and foreign regulations.
- 16.3 Unless otherwise stated in these conditions of purchase, BRK may never be held liable for bidders'/buyers' operating loss, loss of profits, other indirect losses or consequential loss.

17 PRIVACY POLICY

- 17.1 It is important to BRK to ensure confidentiality and security regarding the bidder's/buyer's personal information. The privacy policy can be found on bruun-rasmussen.dk.

18 COMPLAINTS, DISPUTE RESOLUTION AND APPLICABLE LAW

- 18.1 BRK can always be contacted if the bidder/buyer has a complaint.
- 18.2 If the dispute cannot be resolved, the consumer can submit a complaint to the Complaint Resolution Centre, Nævnenes Hus, Toldboden 2, 8800 Viborg, Denmark, email: naevneshus.dk. Consumers residing in another EU country than Denmark can submit their complaint to the European Commission's Online Dispute Resolution platform via the website: <http://ec.europa.eu/odr>.
- 18.3 In Denmark, disputes must be brought before the City Court of Copenhagen, but see paragraphs 18.2. The mandatory rules on jurisdiction apply to consumer interests.

Bruun Rasmussen Kunstauktioner

The above is an English translation of the Danish version of the Conditions of Purchase. In case of a dispute, only the Danish version of the present Conditions of Purchase of Bruun Rasmussen is valid.

ADDRESSES

BRUUN RASMUSSEN AUCTIONEERS

COPENHAGEN – BREDGADE

BREDGADE 33, DK-1260 COPENHAGEN K
+45 8818 1111 / info@bruun-rasmussen.dk

COPENHAGEN – SUNDKROGSGADE

SUNDKROGSGADE 30, DK-2150 NORDHAVN
+45 8818 1111 / info@bruun-rasmussen.dk

GLOSTRUP

PAUL BERGSØES VEJ 20B, DK-2600 GLOSTRUP
+45 8818 1111 / info@bruun-rasmussen.dk

AARHUS

SØREN FRICHS VEJ 34D, DK-8230 ÅBYHØJ
+45 8818 1100 / aarhus@bruun-rasmussen.dk

FYN

NICK MESSMANN
+45 8818 1232 / nic@bruun-rasmussen.dk

REPRESENTATIVES

FRANCE & BELGIUM

DITTE HERBORG KROGH · PARIS
+33 6 6185 4564 / dhk@bruun-rasmussen.dk

SOUTHERN FRANCE & LUXEMBOURG

PETER KOCH
+45 4045 3403 / p.koch@bruun-rasmussen.dk

GERMANY

NICK MESSMANN
+45 8818 1232 / nic@bruun-rasmussen.dk

USA

BENEDICTE HALLOWELL
+1 617 566 7333 / b.hallowell@bruun-rasmussen.dk

CONTACT DIRECTLY

KONTAKT DIREKTE

HOVEDNUMMER / MAIN NUMBER

Bruun Rasmussen Auctioneers +45 8818 1111

ADMINISTRATION

Jakob Dupont, CEO +45 8818 1081
dupont@bruun-rasmussen.dk

KUNDESERVICE / CUSTOMER SERVICE

kundeservice@bruun-rasmussen.dk +45 8818 1010
customerservice@bruun-rasmussen.dk +45 8818 1010

KOMMISSIONER / COMMISSIONS

Lise Winther Wobido +45 8818 1013
Anja Bering Hansen +45 8818 1028
bids@bruun-rasmussen.dk

BESTILLING AF KATALOGER / CATALOGUE REQUESTS

Kundeservice / Customer service +45 8818 1111

AUKTIONS RÅDGIVNING / AUCTION GUIDANCE

Franziska Kampmann +45 8818 1026
fka@bruun-rasmussen.dk

SHIPPING

shipping@bruun-rasmussen.dk +45 8818 1055

VURDERING OG INFORMATION / VALUATION AND INFORMATION

INDBOVURDERINGER / VALUATION AT YOUR HOME

Liselotte Toxværd Møller +45 8818 1234
ltm@bruun-rasmussen.dk

Hans Ruben +45 8818 1231
hru@bruun-rasmussen.dk

Ralph Lexner +45 8818 1161
rl@bruun-rasmussen.dk

Kasper Nielsen +45 8818 1121
kn@bruun-rasmussen.dk

ARMBÅNDSURE / WRISTWATCHES

Vilhelm Islandi Bramsen +45 8818 1239
vib@bruun-rasmussen.dk

BØGER / BOOKS

Emma Marie Poulsen +45 8818 1217
emp@bruun-rasmussen.dk

FRIMÆRKER / STAMPS

Christian Grundtvig +45 8818 1214
cg@bruun-rasmussen.dk

MØNTER / COINS

Michael Märcher +45 8818 1202
mm@bruun-rasmussen.dk

MODERNE DESIGN / MODERN DESIGN

Peter Kjelgaard Jensen +45 8818 1191
pkj@bruun-rasmussen.dk

MODERNE KUNST / MODERN ART

Niels Raben +45 8818 1181
nr@bruun-rasmussen.dk

Niels Boe-Hauggaard +45 8818 1182
nbh@bruun-rasmussen.dk

MODERNE SØLV / MODERN SILVER

Amalie Hansen +45 8818 1194
amh@bruun-rasmussen.dk

PORCELÆN, GLAS OG ASIATISK KUNST / CERAMICS, GLASS AND ASIAN ART

Ralph Lexner +45 8818 1161
rl@bruun-rasmussen.dk

Line Hjorth Langkjær +45 8818 1166
lla@bruun-rasmussen.dk

RUSSISK KUNST / RUSSIAN ART

Martin Hans Borg +45 8818 1128
mhb@bruun-rasmussen.dk

SMYKKER / JEWELLERY

Katrin Mikkelsen Sørensen +45 8818 1174
kms@bruun-rasmussen.dk

TÆPPER / CARPETS

Henrik Schleppegrell +45 8818 1145
hsc@bruun-rasmussen.dk

VIN / WINE

Thomas Rosendahl Andersen +45 8818 1206
tra@bruun-rasmussen.dk

VÅBEN / WEAPONS

Ralph Lexner +45 8818 1161
rl@bruun-rasmussen.dk

ÆLDRE KUNST / FINE ART

Julie Arendse Voss +45 8818 1123
jav@bruun-rasmussen.dk

Birte Stokholm +45 8818 1122
bst@bruun-rasmussen.dk

ÆLDRE MØBLER / FURNITURE

Henrik Schleppegrell +45 8818 1145
hsc@bruun-rasmussen.dk

Anders Fredsted +45 8818 1142
afr@bruun-rasmussen.dk

ÆLDRE SØLV / SILVER

Heidi Schophuus Jensen +45 8818 1163
hsj@bruun-rasmussen.dk

COMMISSION BIDS

KOMMISSIONSBUD

It is possible to leave commission bids if you can not be present at the auction yourself. This service is free of charge.

When leaving a commission bid, you are instructing our customer service to bid up to a specified amount on your behalf.

The situation can occur that another buyer has already bid the same as you were prepared to. Are you then willing to bid further? If not the lot will be sold to another buyer.

If you do not wish to exceed your bid then write "Max", for maximum, next to the amount. You can also allow us to raise your bid by approx. 15% or approx. 25%.

The hammer price may be higher or lower than the estimated price, so it is possible to buy below the estimate. Bruun Rasmussen will always buy at the lowest price possible, as if you yourself had been present at the auction.

All commission bids are strictly confidential.

Commission bids must be submitted no later than **24 hours** prior to the start of the auction.

HOW TO MAKE A COMMISSION BID:

Complete the commission form with all pertinent information.

Indicate the lot number.

Indicate the amount you are prepared to bid.

Should this amount be the absolute maximum, please write "Max" in the appropriate column.

You can also allow us to bid by up to approx. 15% or approx. 25% more by indicating so.

Sign the commission form and make sure that Bruun Rasmussen receives it **24 hours** prior to the start of the auction.

If the information should be insufficient, Bruun Rasmussen can abstain from bidding. Bruun Rasmussen can not be held responsible for error in bidding or failure to execute bids.

INTERNET:

Commission bids can be submitted via website bruun-rasmussen.dk directly from the page with the item you want to submit a bid for.

Deadline for submissions of bids via the website is **3 hours** prior to the start of the auction.

Submitted bids are shown under "Your bids" when you are logged in. Please contact technical support on +45 8818 1114 for questions about the registration and submission of bids on the website.

For additional information, please consult "Conditions of Purchase" §1.

TELEPHONE BIDDING:

Should you wish to bid at auction by telephone, please inform Bruun Rasmussen of your name and telephone number, as well as which catalogue numbers you are interested in, no later than **3 hours** prior to the start of the auction. You will then be contacted shortly before the relevant lot comes under the hammer, thereby allowing you to participate without being in the auction room yourself.

For additional information, please consult "Conditions of Purchase" §1.

Det er muligt at afgive kommissionsbud, hvis De ikke selv kan være til stede på auktionens dag. Denne service er gratis.

Når De afgiver en kommission, beder De vores kundeservice på Deres vegne byde op til et af Dem bestemt beløb i hammerslag.

Der kan opstå den situation, at en anden køber allerede har budt det beløb, som De ønsker at afgive. Er De da villig til at gå et bud højere eller er De indforstået med at nummeret sælges til anden side?

Ønsker De ikke at byde højere så skriv "Max" ud for beløbet. Er De i tvivl om hvor højt De vil byde, kan De hæve budet med op til ca. 15% eller ca. 25%.

Salgsprisen kan blive højere eller lavere end vurderingen, så der er også mulighed for at købe til under den angivne vurdering. Vor kundeservice køber altid så billigt som muligt til Dem, som havde De selv været tilstede på auktionen.

Alle kommissioner behandles strengt fortroligt.

Kommissionsbud skal være Bruun Rasmussen i hænde senest **24 timer** før auktionens start.

SÅDAN BYDER DE:

Udfyld blanketten kommissionsbud med alle oplysninger.

Angiv katalognummer.

Angiv beløbet De ønsker at byde.

Er dette Deres absolutte maximum bedes De anføre "Max" i kolonnen.

De kan også forhøje Deres bud med henholdsvis ca. 15% eller ca. 25%, ved at indikere dette i kolonnen.

De bedes underskrive kommissionsblanketten og sikre Dem, at Bruun Rasmussen modtager den senest **24 timer** før auktionens start.

Hvis Deres oplysninger ikke er tilstrækkelige, kan Bruun Rasmussen undlade at byde for Dem, ligesom Bruun Rasmussen ikke kan gøres ansvarlig for fejl ved budgivningen.

INTERNET:

Kommissionsbud kan afgives på hjemmesiden bruun-rasmussen.dk direkte fra siden med den effekt, De ønsker at byde på.

Seneste afgivelse af bud via hjemmesiden er **3 timer** før auktionens start.

Afgivne bud kan ses på hjemmesiden under "Deres bud", når de er logget ind. Kontakt teknisk support på 8818 1114 for spørgsmål om registrering og budgivning via internettet.

For yderligere information, se "Købskonditioner", §1.

TELEFONBUD:

Såfremt De ønsker at byde pr. telefon, bedes De oplyse Bruun Rasmussen Deres navn og telefonnummer samt hvilke katalognumre, De ønsker at byde på, senest **3 timer** før auktionens start. De vil så blive ringet op kort før, den aktuelle vare kommer under hammeren, og De kan på denne måde deltage i auktionen uden selv at være til stede.

For yderligere information, se "Købskonditioner" på bruun-rasmussen.dk under "Guide".

COMMISSION BIDS

KOMMISSIONSBUD

BREDGADE

Skal være Bruun Rasmussen i hænde senest **24 timer** før auktionens start.
Must be submitted no later than 24 hours prior to the start of the auction.

AUKTION NR AUCTION NO: **914**

Navn Name: *

Adresse Address: *

Postnr./by City: *

Land Country: * Fax:

Tel: *

e-mail: CVR-nr. VAT No.:

Bank: Konto nr. Acct. No.:

Adresse Address:

Postnr./By City: Land Country:

Tel: Kontaktperson Contact:

Obligatoriske felter er mærket med en stjerne * *Mandatory fields are marked with an asterisk **

Undertegnede giver hermed fuldmagt til Bruun Rasmussen Kunstauktioner A/S om på mine vegne at købe nedennævnte katalognumre så fordelagtigt som muligt, inden for det af mig anførte beløb, i hammerslag.
I hereby request that Bruun Rasmussen bid on my behalf on the following lots up at the prices indicated below.

Undertegnede har udfyldt ovennævnte med de ønskede oplysninger, samt har accepteret købskonditionerne.
The undersigned has supplied the required information and agrees to be bound by the conditions of purchase.

Signatur: * B.R. kunde-nr. Client No.:

Jeg ønsker at modtage salgsresultater på de emner jeg har budt på via email dagligt efter auktion
I wish to receive sales results on the items I have been bidding on via e-mail every day after the auction

på e-mail adressen *on this e-mail address:*

Katalog nr. Lot. No.	Beskrivelse Description	Bud kr. Bid DKK	Max	+15%	+25%

BRUUN RASMUSSEN KUNSTAUKTIONER A/S

Bredgade 33 · DK-1260 København K · Tel +45 8818 1111 · Fax +45 8818 1112 · bids@bruun-rasmussen.dk · bruun-rasmussen.dk

Fortsættes næste side *Please turn over*





THE ART OF LUXURY

